

DEVON

2009 PRIZE LIST

Devon Horse Show and Country Fair

Devon, PA

for the benefit of
The Bryn Mawr Hospital



"Where Champions Meet"

®

"AA Hunters"

USEF *****Jumpers

National Show Hunter

Hall of Fame Honor Show

Thursday, May 21 through Saturday, May 30

Entries Close

March 30, 2009

Choose Extended Stay HotelsSM



*We are everywhere
you need to be
in the market!*

Malvern/ Great Valley

Homestead Studio Suites
Philadelphia - Malvern
8 East Swedesford Rd.
Malvern, PA 19355
Telephone: 610-695-9200
Fax: 610-695-9248
MLV@extendedstay.com

At ExtendedStayAmerica, Homestead Studio Suites, StudioPLUS, Crossland and ExtendedStayDeluxe, we are committed to providing our guests the best value in the industry.

Whether you're in town for business or pleasure, you don't want to spend your time crowded in a typical hotel room. Our studio suites are designed with the perfect blend of comfort and convenience all at great low rates.

- Furnished Studios with Fully-Equipped Kitchens
- Workspace with Wireless High-Speed Internet Access (site-specific; chainwide by July, 2005)
- On-Site Guest Laundry Facility
- Free Utilities
- Pet Friendly

*Book Online
& Save!*



ExtendedStayHotels.com | 800-EXT-STAY

DEVON HORSE SHOW AND COUNTRY FAIR, INC.

RULES AND REGULATIONS

EVERY CLASS OFFERED HEREIN WHICH IS COVERED BY THE RULES AND SPECIFICATIONS OF THE CURRENT USEF RULE BOOK WILL BE CONDUCTED AND JUDGED IN ACCORDANCE THEREWITH.

TIME SCHEDULE: The time schedule and order of events herein is tentative. The white booklet (available at the show office) will contain the official starting times, changes in scheduling and revisions. EXHIBITORS ARE RESPONSIBLE FOR HAVING ENTRIES AT THE RING 30 MINUTES BEFORE CLASS TIME. NO CLASS WILL BE DELAYED MORE THAN 3 MINUTES. EXHIBITORS MUST REQUEST PADDOCK MASTER TO ADJUST FOR CONFLICTS.

ENTRIES: Entries for Hunter, Equitation and Jumper Sections close Monday, March 30, 2009. Entries postmarked after midnight, Monday, March 30, 2009 will not be accepted, unless otherwise noted. Entries for Saddlebred, Hackney, Harness, Roadster, Coaching, Driving, Pleasure Drive and Friesians close on Monday, April 20, 2009. Post entries will not be accepted unless otherwise noted. **NO "BLANK CHECKS" ACCEPTED** - they will be filled in for proper amount. All entries will be charged a \$50.00 (non-refundable/non-transferable) Office Fee. Late entries in the hunter and jumper division will be placed below all entries received by the close of entries. No faxed entries will be accepted.

Entries with postage meter date and postmark: Where an entry is received by mail bearing a postage meter date as well as a postmark by the post office department, the post office date will be considered the effective date of mailing.

Entries with postage meter date and no postmark: Where an entry is received by mail bearing a postage meter date without a postmark by the post office department, the metered date shall be considered as an official postmark only if received within seven days of the date shown.

QUALIFYING HUNTER & JUMPER ENTRIES ONLY: Complete entry blank. Send check for \$100.00, which includes a non-refundable/non-deductible qualifying fee (\$50.00) and non-refundable/non-transferable Office Fee (\$50.00). Exception, open jumper riders send check for \$150.00, which includes a one time non-refundable/non-deductible qualifying fee of \$100. Do not enclose entry fees or stall fees.

ACCEPTANCE LETTERS WILL BE SENT AS INDICATED ON THE ENTRY BLANK.

In order to confirm your acceptance, a check for entries, nominations, and stall fees (as it appears on the bill enclosed with acceptance letter) must be returned to the Office by the date indicated on said bill.

IF MORE THAN ONE (1) QUALIFYING ENTRY IS BEING SENT, PLEASE ORDER TACK STALLS ON A SEPARATE ENTRY BLANK.

Complete entry blank enclosed, including all USEF/USHJA/ASHA numbers and signatures required. ONE HORSE PER ENTRY BLANK. Additional entry blanks may be obtained by calling 717-867-5643 or www.thedevonhorseshow.org.

All exhibitors must present current proof of membership with USEF, or pay the \$30 non-member fee. Exhibitors must present current proof of membership with appropriate breed/discipline associations (USHJA, ASHA, etc) or pay the appropriate non-member fees. Exhibitors showing in amateur restricted classes, must present proof of USEF amateur status or pay the non-member amateur fee of \$30 before numbers can be picked up.

All Exhibitors in the Pony and Junior Hunter and Hackney Pony Sections must present proof of current USEF measurement before numbers can be picked up.

All Horses showing in the equitation, hunter or jumper divisions must present current USHJA Horse Registration.

All Horses showing in the saddlebred division must present current breed papers.

The Devon Horse Show reserves the right to limit the number of entries accepted for any division. USEF GR1509.

The Committee reserves the right to decline any entry of persons suspended or expelled from the Federation. Management reserves the right to decline any entry of an exhibitor or the participation of any agent, trainer, rider, driver or handler who has shown an objectionable attitude or behavior at a Licensed Competition or towards its management, which management is able to substantiate, or previous unsportsmanlike behavior at a Licensed Competition which management is able to substantiate.

Horses shown in classes in which they have not been entered will be required to pay DOUBLE ENTRY FEE in those classes.

SADDLEBRED, HACKNEY, HARNESS EXHIBITORS: Post entries for individual classes will only be accepted for horses already entered. Any class changes (ie.; scratches/adds) must be completed in the Show Office by 12:00 noon for afternoon classes and/or by 5:00 pm for evening classes on the day of the competition.

HUNTERS: Hunter Sections restricting entries based on winnings will use USEF National Horse of the Year points received at shows starting on or after March 31, 2008 through shows starting on or before March 29, 2009, as means of qualification, using the top 15 horse shows for each entry during this time period. This office obtains and verifies each entry's points directly from USEF. Management will allow the horses/ponies who were Champions at the Devon Horse Show in 2008 to show in 2009 in their respective sections, if entered and eligible.

JUMPERS: Junior and Amateur Owner Jumper Sections restricting entries based on winnings will use USEF Records to accept horses based on the qualifying period of shows starting on or after March 31, 2008 through shows starting on or before March 29, 2009. Money won outside the U.S. must be on record with and confirmed by USEF. Pony and Adult Amateur Jumper Sections will use USEF Points received at shows starting on or after March 31, 2008 through shows starting on or before March 29, 2009, as a means of qualification, using the top 15 horse shows for each entry during this time period. This office obtains and verifies each entry's money record directly from USEF. In classes where the rides are limited, the rider's name must be listed on the entry form.

OPEN JUMPERS: Open Jumper riders will qualify based on their ranking on the USEF Computer List dated April 3, 2009. Two riders may be selected as wildcards, at the discretion of management.

LOCAL HUNTERS: Exhibitors entering the Local Hunter Section must include entry, stall and drug fee with entry blanks.

EQUITATION: For Equitation Only - Those who have properly entered and have been accepted to show in one or more of the equitation classes offered may, if eligible, post-enter additional equitation classes, by noon Wednesday, May 20, 2009. Exhibitors entering the WIHS Classic, USEF Talent Search, USEF Medal and/or the ASPCA Maclay must include entry, stall and drug fees with entry blanks.

STARTING ORDERS: Starting orders will be established for every class over fences. A systematic rotation will be employed within each section. The starting orders for the Junior and Amateur-Owner Jumper Classics and the Open Jumper Stake will be drawn first and the remaining classes will be rotated off of those orders. The starting order for the Grand Prix will be a separate draw.

LIMITED ENTRIES:

Section entries are limited as follows:

	Approximate Number To Be Accepted		Approximate Number To Be Accepted
Small Pony Hunters	30	Green Conf. Hunters	20
Medium Pony Hunters	30	Regular Working Hunters	20
Large Pony Hunters	30	Regular Conf. Hunters	15
Small Junior Hunters, 15 & under	20	A/O Hunters-18 to 35	27
Small Junior Hunters, 16 & 17	20	A/O Hunters-Over 35	27
Large Junior Hunters, 15 & under	20	Pony Jumpers	20
Large Junior Hunters, 16 & 17	20	Junior Jumpers	30
1st Year Green Hunters	20	A/O Jumpers	25
2nd Year Green Hunters	20	Adult Amateur Jumper	20
Open Jumper Riders	30		

RING SIZES: Dixon Oval-150' x 325'; Gold Ring-148' x 295'; Footing-Limestone Screenings & Jersey sand mixture.

FEES: Payment of all fees must be made in U.S. funds. A penalty of \$50.00 will be charged for all non-negotiable funds. Management reserves the right to prohibit from competition and return the entry of any owner, rider, driver or trainer whose processing or entry fee payment has been returned as non-negotiable on one or more occasions. The horse show reserves the right to require guaranteed funds from exhibitors.

OFFICE/ADMIN FEE: The non-refundable/non-transferable office fee includes the following: equine ambulance and attendants, Emergency Medical Professionals and entry processing.

REFUNDS: No refunds will be made on stall fees under any circumstances.

No substitution of horses may be made after the closing of entries, except saddlebred entries. Any saddlebred substitution occurring on or after the start of the show, May 21, 2009, will be charged a scratch fee for the horse not competing. No horse may be withdrawn from competition without permission of the Show management. Exhibitors shall be held responsible for entry fees of all horses entered by them or their agents.

Horses entered may be scratched without a veterinarian certificate, by written notice to the show secretary (letter, telegram, official scratch sheet, etc.) **RECEIVED AT LEAST 3 DAYS PRIOR TO THE BEGINNING OF THE SECTION IN WHICH THE HORSE HAS BEEN ENTERED.** When valid notification is received, the entry fee will be refunded, less a \$50.00 scratch fee. Should a horse suffer a severe injury within 3 days of the beginning of the section in which the horse has been entered and be deemed unable to show by the Horse Show Veterinarian, this 3 day notice may be waived. If a horse has shown in any class it is not eligible to receive a refund. Refunds will be mailed within 30 days after the completion of the show.

PRIZE MONEY: All prize money will be paid through the show office. All prize monies in excess of balance due will be mailed to the owner of record, unless otherwise directed, within 30 days after the completion of the show. Every exhibitor must furnish his/her social security or Federal I.D. number or be subject to IRS withholding of 30%.

TROPHIES: The Devon Horse Show will retain all challenge trophies and will be responsible for their engraving.

PASSES & NUMBERS: Passes, numbers, etc. for exhibitors may be obtained from the show office.

PARKING: Parking is extremely limited and will be on a first come first served basis! No cars will be allowed on the grounds at any time without the proper passes. Vans and trailers will not be allowed on the grounds while the Show is in session.

DEVON AREA HOTELS and MOTELS

Comfort Inn Valley Forge

550 West DeKalb Pike
King of Prussia, PA 19406
610-962-0700

Courtyard Marriott - Malvern

280 Old Morehall Road
Malvern, PA 19355
610-993-2600

Courtyard Marriott - Devon OFFICIAL HOTEL

762 West Lancaster Pike (Rt. 30)
Wayne, PA 19087
610-687-6633
800-321-2211

Courtyard Marriott - Valley Forge

1100 Drummers Lane
Wayne, PA 19087
610-687-6700

Crowne Plaza - Valley Forge

260 Mall Boulevard
King of Prussia, PA 19406
610-265-7500

Desmond Hotel - Great Valley

One Liberty Boulevard
Malvern, PA 19355
610-296-9800
800-575-1776

Dolce Valley Forge

301 West DeKalb Pike
King of Prussia, PA 19406
610-337-1200

Fairfield Inn of King of Prussia

285 Mall Boulevard
King of Prussia, PA 19406
610-337-0700

Hampton Inn – Great Valley Radnor Hotel

635 Lancaster Avenue (Rt. 30)
Frazer, PA 19355
610-699-1300

591 East Lancaster Avenue
(Rt. 30)
St. Davids, PA 19087
610-688-5800

Hampton Inn - Plymouth Meeting

2055 Chemical Road
Plymouth Meeting, PA 19462
610-567-0900

Holiday Inn Express & Suites

260 North Gulph Road
King of Prussia, PA 19406
610-768-9500

Holiday Inn Express - Malvern

One Morehall Road
Malvern, PA 19355
610-651-0400

Homestead Studio Suites Hotel

8 East Swedesford Road
Malvern, PA 19355
610-695-9200

Homewood Suites by Hilton

12 East Swedesford Road
Malvern, PA 19355
610-296-3500

Mainstay Suites (Pet Friendly)

440 American Avenue
King of Prussia, PA 19406
484-690-3000

Radisson Hotel Valley Forge

1160 1 Avenue
King Of Prussia, PA 19406
610-337-2000

Sheraton Great Valley Hotel

707 East Lancaster Avenue
(Rt. 30)
Frazer, PA 19355
610-524-5500

Sheraton Park Ridge Hotel

480 North Gulph Road
King of Prussia, PA 19406
610-337-1800

Sleep Inn

440 American Avenue
King of Prussia, PA 19406
484-690-2000

Staybridge Suites

20 Morehall Road
Malvern, PA 19355
610-296-4343

Sweetwater Farm Bed & Breakfast

50 Sweetwater Road
Glen Mills, PA 19342
610-459-4711

Valley Forge Residence Inn (Pets allowed)

600 West Swedesford Rd
Berwyn, Pa 19312
610-640-9494

Valley Forge Suites

888 Chesterbrook Boulevard
Wayne, PA 19087
610-647-6700

DOGS: Dogs will not be permitted on the premises unless restrained on a leash. Stable dogs must be confined at all times. Any owner of a dog found loose in a Show Ring during a competition will be fined \$50.00 and be responsible for the entry fee(s) of the horse(s) whose performance(s) may be disrupted.

CAMPERS: NO CAMPERS ALLOWED ON THE GROUNDS!!!!

SCHOOLING: Daily schooling schedules will be posted. NO LUNGEING OF HORSES WILL BE PERMITTED ANYWHERE ON THE GROUNDS WHILE THE SHOW IS IN SESSION. NO EXCEPTIONS.

HUNTER CHAMPIONSHIPS: Unless otherwise noted, the Champion and Reserve Champion titles in each section will be awarded to two of the four horses/ponies which have earned the most points in all classes over fences in that section. In addition to these points, only these four will receive full points for ribbons won in one Under Saddle Class and half points for ribbons won in Model class (full points for Regular Conformation Model). Ties broken under HU139.

ADDITIONAL RULES: Numbers will be provided by the Horse Show. GR 801.9 will not be enforced.

In all Hunter and Equitation classes management reserves the right to limit the courtesy circle with the use of a dotted line.

Exhibitors are notified that any act of discourtesy or disobedience to the Judges or Officials on the part of any owner, rider, driver, trainer or groom may disqualify the horse, and the owner may forfeit all entry and other fees.

The Committee reserves the right to prohibit any person from attending or showing a horse and to remove any horse or groom from the Show without being liable for compensation.

The Committee will not be responsible for any accident which may occur to any rider, driver, trainer, groom or attendant, animal, carriage or equipment at the Show.

Should any questions or disputes arise that are not provided for in the rules, the same will be referred to the Show Committee whose decision shall be final.

Bio Hazardous Medical Waste Containers will be provided in the stable area. All exhibitors and their agents are responsible for the proper disposal of this waste.

POLING: MANUAL POLING and/or the use of bamboo pole offsets are prohibited. Any rider or trainer who is found poling or using offsets, as well as the horse or pony involved, will be immediately eliminated from the class where the incident occurred, be suspended from further showing for a twenty-four hour period starting from the time of the incident and will forfeit all entry fees. In the case of further violations by that exhibitor, on the same horse or another horse, the exhibitor may be barred from any or all future classes at the show and all stabling, nomination and entry fees will be forfeited.

PLEASE NOTE: Upholding the welfare of the horses being exhibited in the Devon Horse Show is of primary concern to the Devon management team. We require that all horses be treated with the kindness, respect and compassion they deserve and should never be subjected to mistreatment. Exhibitors, owners, trainers and grooms, or their agents, must use reasonable care in the handling and treatment of the horses owned by them or placed in their care for competition or any other purpose.

We will provide for the continuous well being of the horse by vigorously enforcing the rules of USEF which pertain to the welfare of the horse. Exhibitors are cautioned that GR320 and GR806 will be narrowly interpreted. Violators will be automatically penalized by the elimination of the horse involved from the class in which it is participating and the next succeeding class in which it is entered. All such violations will be recorded in the Steward's report and reviewed by the Hearing Committee for such action as may be deemed appropriate.

INFORMATION OFFICES

ENTRY INFORMATION: Ryegate Show Services
1298 Royal Road, Annville, PA 17003
(717) 867-5643 FAX (717) 867-2174

**Direct all entry questions to Ryegate Show Services.
No faxed entries will be accepted.**

ADMINISTRATIVE HORSE SHOW OFFICE: P O Box 865, Devon, PA 19333
(610) 964-0550 FAX (610) 964-1608
PARCEL DELIVERIES: 25 Dorset Rd., Devon, PA 19333

STABLE OFFICE (STARTING WEDNESDAY, MAY 20TH): (610) 688-2665

TICKET OFFICE (OPENS APRIL 6th): (610) 688-2664
Office Hours: Monday, Wednesday & Friday 10 AM-2 PM; Saturday 10 AM - 12 NOON

TROPHY COMMITTEE: (610) 964-0550

COUNTRY FAIR OFFICE: PO Box 925, Southeastern, PA 19399
(610) 525-2533
Office Hours: 9:00 AM-12 Noon
www.thedevonhorseshow.org

LICENSEE: Devon Horse Show & Country Fair - Leonard A. King, CEO

NOTICE

James Leslie Parker & Bob Moseder
are the exclusive photographers for the
2009 Devon Horse Show.

Any other commercial photography, or advertisement thereof, taken of subjects within the confines of the show ring without prior written consent from show management is expressly forbidden. Violation of this rule will be grounds for removal from the show premises.

HOW TO GET THERE

BY AUTOMOBILE or VAN

From Pennsylvania Turnpike-Heading EAST or WEST, or Northeast Extension heading South: I-476 South to Exit 13, Route 30 West to Devon Show Grounds on left.

From Delaware, Maryland and Points South: I-95 North to I-476 North to Route 30 West to Devon Show Grounds on left.

BY TRAIN-PAOLI LOCAL

From 30th Street Station in Philadelphia or Suburban Station in downtown Philadelphia at 16th and John F. Kennedy Boulevard. Paoli Local trains run about every 35 minutes to Devon and return. Nationwide rail connections from 30th Street Station.

BY AIR

From Philadelphia International Airport visitors can take special SEPTA Airport train to 30th Street Railroad Station, and take Paoli Local train to Devon station. Grounds are one block from Devon station.

DEVON HORSE SHOW AND COUNTRY FAIR, INC.
STABLING INFORMATION

1. The State of Pennsylvania requires that all horses must be in possession of a negative Coggins Certificate (E.I.A.). The State of Pennsylvania requirement is a 12 month period. The Devon Horse Show and Country Fair will not accept or process any animal whose negative Coggins Certificate, or copy thereof (issued after June 1, 2008) does not accompany the entry blank.
2. Due to limited stabling facilities, the committee may find it necessary to decline assigning stalls to animals entered in only one performance class or where the entry is being shown in hand or breeding classes only.
3. No stall can be allotted for a horse not entered in the show. If more than 1 qualifying entry is being sent, order tack stalls on separate entry form.
4. Side Saddle, Breeding, and Local Hunters-overnight stalls **ONLY!**
5. Stall fees as follows:
 - Senior Week Stalls-\$175.00
 - Adult Jumper Stalls-\$175.00 - Sunday a.m thru Wednesday a.m. only
 - Junior Weekend Stalls-\$175.00
No stalls for Leadline, Parent & Child, Family Class, and/or Hunt Teams!
 - Driving Weekend Stalls-\$175.00
Saturday a.m. thru Tuesday a.m. Available ONLY to singles & pairs competing in the driving competitions. Very limited.

Overnight Stalls

\$75.00 PER STALL-PER NIGHT

ONLY AVAILABLE **AFTER MAY 25th**

Overnight stalls will **not** be cleaned between occupants.

Tuesday; May 26th, Tuesday 5 p.m. thru Wednesday 5 p.m.

Wednesday; May 27th, Wednesday 5 p.m. thru Thursday 5 p.m.

Thursday; May 28th, Thursday 5 p.m. thru Friday 5 p.m.

Friday; May 29th, Friday 5 p.m. thru Saturday 5 p.m.

6. Permanent Stabling. Stalls approximately 9x9 and 10x10 with doors.
7. Thursday, May 21st through Saturday, May 23rd will be very busy and crowded days. No vans or other vehicles will be permitted to enter the grounds for any purpose while the show is in progress.
8. Junior Weekend stalls will be available from Wednesday, May 20th at 8:00 a.m. A schooling schedule will be posted for Juniors.
9. **Junior Weekend stalls must be vacated by midnight Saturday, May 23rd.**
10. Senior Week stalls, which include Hunters, Jumpers, Saddle Horses, Hackney/Harness Ponies, will not be available until 7:00 A.M. Sunday, May 24th.
11. **Horses entered in Green, Regular Working, Green Conformation and/or Regular Conformation must vacate their stalls by 3:00 P.M., Wed., May 27th.**
12. Due to limited parking, all exhibitors planning on shipping in and out daily should be prepared to park a considerable distance from the grounds. We encourage these exhibitors to order overnight stalls.

Please see page 6 for directions to the grounds.

SHOW OFFICIALS

The Committee reserves the right to vary or add to these names.

JUDGES

HUNTERS, HUNTER SEAT EQUITATION, SIDE SADDLE

Ms. Linda Hough Wellington, FL
Mr. Jimmy Torano Ft. Lauderdale, FL

PONY HUNTERS, HUNTER SEAT EQUITATION

Mr. James M. Clapperton Ann Arbor, MI
Mr. Mark Jungherr Amesbury, MA

HUNTER BREEDING

Mr. Richard D. Abbott (horse & pony) Cochranville, PA
Mr. A. Thom Brede (horse) Stamping Ground, KY
Mr. James M. Clapperton (pony) Ann Arbor, MI

LOCAL HUNTERS

Ms. Lara McPherson McLean, VA

JUMPERS

Mr. Ralph Alfano Wellington, FL
Mr. John D. Ammerman Waitsfield, VT
Mr. Hendrik Nijenhuis Whitehouse Station, NJ

SADDLEBRED, ROADSTER, FINE HARNESS, FRIESIAN, HACKNEY HORSES & PONIES, HARNESS PONIES

Mr. James L. Hale Columbiana, AL

COACHING

.....

CARRIAGE PLEASURE DRIVE

Ms. Marsha Himler (Ponies) Stillwater, NY
(Horses)

COURSE DESIGNERS

Mr. Blake Alder (Hunters & Equitation) Germantown, TN
Mr. Alan Wade (Jumpers) Cashel, Ireland

STEWARDS

Mr. Tom Brennan Charlotte, NC
Ms. Donna Rocchetti Georgetown, KY

SHOW OFFICIALS

SCHOOLING SUPERVISORS

Mr. Walter G. Distler Bedford, NY
Ms. Karen Golding Wellington, FL

ANNOUNCERS

Mr. Peter G. Doubleday Southern Pines, NC
Mr. Peter Fenton Pleasureville, KY
Mr. Ralph Marsh West Chester, PA
Mr. Steve Sarafin Camden, SC

STARTERS

Ms. Helen Dillon Georgetown, Ontario, CAN
Mr. Kevin Giblin Wellington, FL
Mrs. Michele Markward Woodbine, MD

RINGMASTERS

Mr. Bob Drennan Santa Barbara, CA
Mr. Steven Hayes Unionville, PA
Mr. Alan Keeley Pound Ridge, NY

ORGANIST

Ms. Amy Paradise New Waterford, OH

FARRIERS

Mr. Joseph Alfano Lemoyne, PA
Mr. Larry Bender Harrisburg, PA

VETERINARIANS

A list of the Veterinarians and their telephone numbers will be posted in the Show and Stable Offices.

SPECIAL ADVISOR

Mr. Frank D. Chapot Neshanic Station, NJ

COMPUTER SERVICES, SCOREBOARDS, TIMING

Ryegate Show Services Annville, PA

PHOTOGRAPHERS

James Leslie Parker - Hunters & Jumpers Wellington, FL
Bob Moseder - Saddlebred, Hackney & Driving Flagler Beach, FL

ADMINISTRATIVE OFFICERS

Mr. David M. Distler, Manager Norwalk, CT
Mr. Peter G. Doubleday, Manager Southern Pines, NC
Mrs. Kathryn S. Gillmer, Show Secretary Chester Springs, PA
Mr. Graham McCleary, Grounds Manager West Chester, PA
Mr. Tom Blankenship, Stable Manager Westfield, IN
Mr. Tim Scionti, Footing Maintenance Wellington, FL

TENTATIVE TIME SCHEDULE

THURSDAY, MAY 21, 2009

DIXON OVAL — 8:00 A.M.

- 84 Platinum Performance/USEF Show Jumping Talent Search
- 83 WIHS Equitation Classic - Jumper Phase

GOLD RING — 7:00 A.M.

- 301 Hunter Pony Foals
- 302 Hunter Pony Yearlings, Colts/Geldings
- 303 Hunter Pony Yearlings, Fillies
- 304 Hunter Pony 2 Yr. Olds, Colts/Geldings
- 305 Hunter Pony 2 Yr. Olds, Fillies
- 306 Hunter Pony 3 Yr. Olds, Stallions/Geldings
- 307 Hunter Pony 3 Yr. Olds, Mares
- 308 Hunter Pony Produce of Dam
- 309 Hunter Pony Get of Sire
- 310 Hunter Pony Championship, Colt, Stallion or Gelding
- 311 Hunter Pony Championship, Filly/Mare
- 312 Best Young Pony
- 313 PBHA Trophy
- 81 Pessoa/USEF Hunter Seat Medal

ShowNet

Your answer to an organized show day.

Tampa

Charlotte
Jumper Classic

Devon

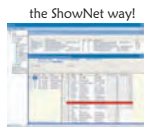
Skidmore
Saratoga

Kentucky

the old way...



Posted Orders of Go
Ring Status
Live Results
Info to Cell Phone
Standby's



the ShowNet way!

Lake Placid

American
Gold Cup

Old Salem

Capital
Challenge

Hampton Classic

For more information visit www.shownet.biz or contact David Orlando

TENTATIVE TIME SCHEDULE

FRIDAY, MAY 22, 2009

DIXON OVAL — 8:00 A.M.

- 82 ASPCA Maclay
- 85 R.W. "Ronnie" Mutch Eq. Ch.
- 201 Jr. Jumpers - II, 2(b)
- 42 Small Jr. Hunter, 16 & 17
- 41 Small Jr. Hunter U/S, 16 & 17
- 32 Small Jr. Hunter, 15 & under
- 31 Small Jr. Hunter U/S, 15 & under
- 62 Large Jr. Hunter, 16 & 17
- 61 Large Jr. Hunter U/S, 16 & 17
- 52 Large Jr. Hunter, 15 & under
- 51 Large Jr. Hunter U/S, 15 & under

GOLDRING — 8:00 A.M.

- 1 Small Pony Model
- 3 Small Pony Hunter-Conformation
- 4 Small Pony Hunter
- 11 Medium Pony Model
- 13 Medium Pony Hunter-Conformation
- 14 Medium Pony Hunter
- 21 Large Pony Model
- 23 Large Pony Hunter-Conformation
- 24 Large Pony Hunter

DIXON OVAL — 8:00 P.M.

- 202 Jr. Jumper-Gambler's Choice

SATURDAY, MAY 23, 2009

DIXON OVAL — 8:00 A.M.

- 43 Small Jr. Hunter Handy, 16 & 17
- 33 Small Jr. Hunter Handy, 15 & under
- 63 Large Jr. Hunter Handy, 16 & 17
- 53 Large Jr. Hunter Handy, 15 & under
- 221 Pony Jumper - II, 2(b)

not before 1:00 P.M.

- 71 Lead Line, under 4 Years
- 72 Lead Line, 4 & 5 Years
- 44 Small Jr. Hunter Stake, 16 & 17
- 34 Small Jr. Hunter Stake, 15 & Under
- 64 Large Jr. Hunter Stake, 16 & 17
- 54 Large Jr. Hunter Stake, 15 & Under
- 45 Small Jr. Hunter Ch., 16 & 17
- 35 Small Jr. Hunter Ch., 15 & Under
- 65 Large Jr. Hunter Ch., 16 & 17
- 55 Large Jr. Hunter Ch., 15 & Under
- 66 Overall Small Jr. Hunter Ch.
- 67 Overall Large Jr. Hunter Ch.
- 68 Devon Grand Jr. Hunter Ch.
- 78 Best Child Rider on a Horse Award

GOLDRING — 8:00 A.M.

- 2 Small Pony U/S
- 5 Small Pony Hunter-Handy
- 6 Small Pony Hunter Stake
- 7 Small Pony Hunter Championship
- 12 Medium Pony U/S
- 15 Medium Pony Hunter-Handy
- 16 Medium Pony Hunter Stake
- 17 Medium Pony Hunter
Championship
- 22 Large Pony U/S
- 25 Large Pony Hunter-Handy
- 26 Large Pony Hunter Stake
- 27 Large Pony Hunter Championship
- 28 Devon Grand Pony Hunter Ch.
- 77 Best Child Rider on a Pony Award
- 29 Pony Sportsmanship Award
- 73 Pony Hunt Teams

DIXON OVAL — 7:00 P.M.

- 203 Jr. Jumper - II, 2(a) SJHOF Classic
- 204 Jr. Jumper Championship
- 205 Leading Jr. Jumper Rider Award
- 206 Jr. Jumper Style of Riding Award
- 74 Horse Hunt Teams
- 76 Parent and Child
- 75 Family Class

TENTATIVE TIME SCHEDULE

SUNDAY, MAY 24, 2009

DIXON OVAL — 1:00 P.M.

- Special Awards
- Mainstreamers
- Exhibition
- 510 Carriage Pleasure Drive
- 222 Pony Jumper - II, 2(b)

DIXON OVAL — 6:30 P.M.

- 223 NAL Pony Jumper - II, 2(a)
- 224 Pony Jumper Championship
- 225 Pony Jumper Style Award
- 199 USHJA Hunter Derby

MONDAY, MAY 25, 2009 MEMORIAL DAY

DIXON OVAL — 8:00 A.M.

- 101 Model Green Conformation Hunter
- 111 Model Regular Conformation Hunter
- 122 First Year Green Hunter
- 123 First Year Green Hunter
- 103 Green Conformation Hunter
- 102 Green Conformation U/S
- 132 Second Year Green Hunter
- 131 Second Year Green U/S
- 142 Regular Working Hunter
- 141 Regular Working Hunter U/S
- 114 Regular Conf. Hunter
- 115 Regular Conformation Hunter
- 462 Open Tandems - Horse or Pony
- 463 Scurry Driving
- 233 Adult Jumper - II, 1

DIXON OVAL — 7:00 P.M.

- 231 Adult Jumper - II, 2(b)
- 465 Pair Pony - Pleasure Exhibition
- 451 Coaching - Appointments
- 466 Pair Pony - Scurry
- 467 Pair Pony Championship

TUESDAY, MAY 26, 2009

DIXON OVAL — 8:00 A.M.

- 124 First Year Green Hunter-Handy
- 121 First Year Green U/S
- 104 Green Conformation Hunter
- 105 Green Conformation Hunter-Handy
- 133 Second Year Green Hunter
- 134 Second Year Green Hunter-Handy
- 113 Regular Conformation Hunter-Handy
- 112 Regular Conformation Hunter U/S
- 143 Regular Working Hunter
- 144 Regular Working Hunter-Handy
- 461 Open Unicorns
- 232 Adult Jumper-II, 2a
- 234 Adult Jumper Championship

GOLD RING — 9:00 A.M.

- 261 Five Year Old Young Jumper-II, 2(b)
- 263 Six Year Old Young Jumper-II, 2(b)
- 265 Seven/Eight Year Old Young Jumper-II, 2(b)

DIXON OVAL — 7:00 P.M.

- 243 Open Jumper-II, 2(a)
- 468 Single Horse Pleasure Driving
- 452 Coaching
- 457 Coach Horn Competition
- 469 Single Horse Scurry
- 470 Single Horse Championship
- 242 Open Jumper-II, 1

TENTATIVE TIME SCHEDULE

WEDNESDAY, MAY 27, 2009

DIXON OVAL — 8:00 A.M.

- 125 First Year Green Hunter Stake
- 126 First Year Green Hunter Ch.
- 106 Green Conformation Hunter Stake
- 107 Green Conformation Hunter Ch.
- 135 Second Year Green Hunter Stake
- 136 Second Year Green Hunter Ch.
- 116 Regular Conformation Hunter Stake
- 117 Regular Conformation Hunter Ch.
- 145 Regular Working Hunter Stake
- 146 Regular Working Hunter Ch.
- 147 Regular Working Hunter Leading
Lady Rider Award
- 148 Leading Mare Award
- 149 Devon Grand Hunter
Championship
- 150 Devon Leading Hunter Rider
- 173 Ladies Side Saddle Hunter Hack
- 171 Ladies Side Saddle Over Fences
- 266 Seven/Eight Year Old
Young Jumper-II, 2(b)
- 244 Open Jumper-II, 2(a)

GOLD RING — 9:00 A.M.

- 262 Five Year Old Young Jumper-II, 2(b)
- 264 Six Year Old Young Jumper-II, 2(b)

DIXON OVAL — 7:00 P.M.

- 245 Open Jumper-Hit & Hurry
- 172 Ladies Side Saddle U/S
- 174 Ladies Side Saddle Championship
- 425 Harness Pony - Open
- 361 Five Gaited - Lady to Ride
- 391 Western Country Pleasure
- 374 Fine Harness - Open
- 401 Park Horse - Amateur
- 436 Roadster Pony - Open
- 352 Three Gaited - Lady to Ride
- 453 Coaching
- 357 Three Gaited - Open
- 381 Saddlebred Pleasure Driving
- 414 Hackney Pony - Open
- 481 Friesian Pleasure - Open
- 431 Roadster Horse - Amateur
- 367 Five Gaited - Open

THURSDAY, MAY 28, 2009

DIXON OVAL — 8:00 A.M.

- 283 PA Bred Yearling, Colt
- 284 PA Bred Yearling, Filly
- 285 PA Bred 2 Year Old, Colt
- 286 PA Bred 2 Year Old, Filly
- 287 PA Bred 3 Year Old
- 289 Best PA Bred Horse
- 292 Leading PA Handler
- 271 Thoroughbred Yearling, Colt
- 272 Thoroughbred Yearling, Filly
- 273 Non-Thoroughbred Yearling, Colt
- 274 Non-Thoroughbred Yearling, Filly
- 275 Thoroughbred 2 Year Old, Colt
- 276 Thoroughbred 2 Year Old, Filly
- 277 Non-Thoroughbred 2 Year Old, Colt
- 278 Non-Thoroughbred 2 Year Old, Filly
- 279 Thoroughbred 3 Year Old
- 280 Non-Thoroughbred 3 Year Old,
Stallions & Geldings
- 281 Non-Thoroughbred 3 Year Old,
Mares
- 282 Mare Suitable to Produce
- 288 Best Yearling
- 290 Best Young Horse
- 291 Leading Handler
- 293 Amateur Handler

GOLD RING — (following Class 293)

- 294 Young Hunter U/S

DIXON OVAL — 4:30 P.M.

"Devon at Sunset"

- 424 Hackney/Harness Pony - Amateur
- 396 Country Pleasure Driving
- 363 Five Gaited - Amateur
- 434 Roadster Pony - Amateur
- 384 Three Gaited Show Pleasure-Adult
- 454 Coaching-Time Competition
- 353 Three Gaited - Amateur
- 413 Hackney Pony - Amateur
- 403 Park Horse - Open
- Exhibition**
- 394 Country Pleasure - Adult
- 373 Fine Harness - Amateur
- 432 Roadster Horse - Open
- 482 Friesian Pleasure - Amateur
- 411 Hackney Horse - Open

8:00 PM

- 246 Grand Prix of Devon-II, 2(a)
- 247 McDevitt Style Award

TENTATIVE TIME SCHEDULE

FRIDAY, MAY 29, 2009

DIXON OVAL — 7:30 A.M.

- 211 Amateur Owner Jumper-II, 2(b)
- 152 A/O Hunter 18-35
- 153 A/O Hunter 18-35
- 162 A/O Hunter Over 35
- 163 A/O Hunter Over 35
- 161 A/O Hunter Over 35 U/S
- 151 A/O Hunter 18-35 U/S
- 383 Three Gaited Pleasure - Jr. Exhibitor
- 435 Roadster Pony - Limit
- 351 Three Gaited - Jr. Exhibitor
- 365 Five Gaited - Jr/Novice
- 421 Hackney/Harness Pony Pleasure Driving
- 386 Five Gaited Pleasure
- 393 Country Pleasure - Jr. Exhibitor
- 426 Harness Pony - Limit
- 212 Amateur Owner Jumper - FEI 269
- 241 NAL Open Jumper - III

GOLDRING — 8:30 A.M.

- 182 Local Hunter
- 183 Local Hunter-Owner to Ride

DIXON OVAL — 7:30 P.M.

- 248 Open Jumper-Gambler's Choice
 - 455 Coaching-Obstacle
 - 458 Coach Horn Competition
 - 456 Coaching Championship
 - 402 Park Horse Stake - Amateur
 - 392 Western Country Pleasure Ch.
 - 375 Fine Harness Championship
 - 417 Hackney Pony Ch. - Amateur
 - 483 Friesian Pleasure Ch.
 - 358 Three Gaited Stake
- Exhibition**
- 428 Hackney/Harness Pony Ch - Amat.
 - 382 Pleasure Driving Championship
 - 437 Roadster Pony Championship
 - 368 Five Gaited Stake

SATURDAY, MAY 30, 2009

DIXON OVAL — 8:00 A.M.

- 154 A/O Hunter 18-35-Handy
- 155 A/O Hunter Stake 18-35
- 156 A/O Hunter 18-35 Championship
- 164 A/O Hunter Over 35-Handy
- 165 A/O Hunter Stake Over 35
- 166 A/O Hunter Over 35 Championship
- 167 Devon Grand A/O Hunter Ch.
- 168 Devon Leading A/O Hunter Rider
- 187 Working Fox Hunter
- 404 Park Horse Stake
- 423 H/H Pony Pleasure Driving Ch.
- 387 Five Gaited Pleasure Championship
- 438 Roadster Pony Ch. - Amateur
- 397 Country Pleasure Driving Ch.
- 412 Hackney Horse Championship
- 213 A/O Jumper SJHOF Classic-II, 2(a)
- 214 A/O Jumper Championship
- 215 A/O Jumper Leading Rider

GOLDRING — 8:30 A.M.

- 184 Local Hunter Stake
- 181 Local Hunter U/S
- 185 Local Hunter Championship
- 186 Local Hunter Sportsmanship Award

DIXON OVAL — 7:00 P.M.

- 354 Three Gaited Stake - Amateur
 - 416 Hackney Pony Championship
 - 395 Country Pleasure Championship
 - 376 Fine Harness Ch. - Amateur
 - 385 Three Gaited Pleasure Championship
- Exhibition**
- 433 Roadster Horse Championship
 - 427 Hackney/Harness Pony Ch.
 - 364 Five Gaited Stake - Amateur
 - 249 Open Jumper Stake - II, 2(a)
 - 250 Open Jumper Championship
 - 251 Leading Open Jumper Rider

Don't leave home
without **THIS**!



© Janet Hechen Photography

Taylor, Harris Insurance Services, Ltd.

WORLDWIDE EQUINE INSURANCE SPECIALISTS

Post Office Box 449 • Middleburg, VA 20118 • 540.253.7779 • 800.291.4774 • www.taylorharris.com

■ Sponsor of the 2009 National Children's Medal ■

\$24,000 PONY HUNTER SECTION

The Committee will limit the number of entries accepted in this division. See page 3. No rider may ride more than two ponies in each section. (You may enter as many ponies as you wish). Every pony must have a current measurement card or a valid measurement form issued by USEF. Small ponies (not exceeding 12.2 hands) to jump 2'3", Medium ponies (over 12.2 hands but not exceeding 13.2 hands) to jump 2'6", and Large ponies (over 13.2 hands but not exceeding 14.2 hands) to jump 3'. Classes to be judged on performance and soundness except where otherwise noted. Manners and suitability of a pony for a rider shall be emphasized and extreme speed shall be penalized. Full points in all classes except models which are half points. Where trophies are involved, the judges shall select the pony from the sections involved which in their opinion has had the better performance.

**ENTRY FEE FOR CLASSES 1-6, 8-13, OR 15-20 IS \$800
INDIVIDUAL CLASSES MAY NOT BE ENTERED.**

\$8,000 SMALL PONY HUNTER

CLASS 1

SMALL PONY HUNTER-MODEL

Shown in hand. To be judged on conformation, way of moving and soundness. No additional entry fee.

CLASS 2

\$1,500 SMALL PONY HUNTER UNDER SADDLE

CLASSES 3, 4, 5 (HANDY)

\$1,500 SMALL PONY HUNTER

Conformation 25% in Class 3.

CLASS 6

\$2,000 SMALL PONY HUNTER STAKE

CLASS 7

SMALL PONY HUNTER CHAMPION AND RESERVE CHAMPION

Trophy and Champion Ribbon; Reserve Champion Ribbon

\$8,000 MEDIUM PONY HUNTER

CLASS 11

MEDIUM PONY HUNTER-MODEL

Shown in hand. To be judged on conformation, way of moving and soundness. No additional entry fee.

CLASS 12

\$1,500 MEDIUM PONY HUNTER UNDER SADDLE

CLASSES 13, 14, 15 (HANDY)

\$1,500 MEDIUM PONY HUNTER

Conformation 25% in Class 13.

CLASS 16

\$2,000 MEDIUM PONY HUNTER STAKE

CLASS 17

MEDIUM PONY HUNTER CHAMPION AND RESERVE CHAMPION

Trophy and Champion Ribbon; Reserve Champion Ribbon

\$8,000 LARGE PONY HUNTER

CLASS 21

LARGE PONY HUNTER-MODEL

Shown in hand. To be judged on conformation, way of moving and soundness. No additional entry fee.

CLASS 22

\$1,500 LARGE PONY HUNTER UNDER SADDLE

CLASSES 23, 24, 25 (HANDY)

\$1,500 LARGE PONY HUNTER

Conformation 25% in Class 23.

CLASS 26

\$2,000 LARGE PONY HUNTER STAKE

CLASS 27

LARGE PONY HUNTER CHAMPION AND RESERVE CHAMPION

Trophy and Champion Ribbon; Reserve Champion Ribbon

CLASS 28

DEVON GRAND PONY HUNTER CHAMPIONSHIP

Awarded to the pony that has acquired the greatest number of points in the Pony Hunter Division. Ties broken under HU139

Trophy and Grand Champion Ribbon

CLASS 29

PONY SPORTSMANSHIP AWARD

Awarded to the rider in the pony hunter division who displays exemplary sportsmanship throughout junior weekend at the Devon Horse Show.

77-BEST CHILD RIDER ON A PONY TROPHY

To be awarded to the junior exhibitor entered and showing in the Hunter Seat Equitation and/or Junior Hunter Sections, who in the opinion of the judges is the best rider.

Riders may compete in EITHER Class 77 (pony) or Class 78 (horse), but not both.

Entry Fee \$35

Trophy and Four Ribbons per class

Prize Money Purses will be distributed as follows in the Hunter Division.

PURSE	1st	2nd	3rd	4th	5th	6th	7th	8th
\$165	70	40	20	15	10	10	R	R
200	75	50	30	20	15	10	R	R
250	85	55	40	30	25	15	R	R
1,500	410	270	220	170	140	110	90	90
2,000	525	345	290	230	190	160	130	130
2,500	700	460	380	300	240	170	125	125

\$32,000 JUNIOR HUNTER SECTION

The Committee will limit the number of entries accepted in this division. See page 3. Points won at best 15 shows in a single height section (regardless of rider's age) will be considered. No rider may ride more than two horses in each section. (You may enter as many horses as you wish). **Entries will be qualified and accepted in only the height and age section entered and may not change for any reason.**

Every horse must have a current measurement card or a valid measurement form issued by USEF. In all classes over fences jumps at 3'6". Classes to be judged on performance and soundness except where otherwise noted. Manners and suitability shall be emphasized and extreme speed shall be penalized. Full points in all classes.

Where trophies are involved, the judges shall select the horse from the sections involved which in their opinion has had the better performance.

**ENTRY FEES FOR CLASSES 31-34, 41-44, 51-54 OR 61-64 IS \$800
INDIVIDUAL CLASSES MAY NOT BE ENTERED.**

\$8,000 SMALL JUNIOR HUNTER — Under 16.0 hands, Riders 15 years of age and under.

CLASS 31

\$1,500 SMALL JUNIOR HUNTER, 15 & UNDER, UNDER SADDLE

CLASSES 32, 33 (HANDY)

\$2,000 SMALL JUNIOR HUNTER, 15 & UNDER

CLASS 34

\$2,500 SMALL JUNIOR HUNTER, 15 & UNDER, STAKE

CLASS 35

SMALL JUNIOR HUNTER, 15 & UNDER, CHAMPION AND RESERVE CHAMPION

Trophy and Champion Ribbon; Reserve Champion Ribbon

\$8,000 SMALL JUNIOR HUNTER — Under 16.0 hands, Riders 16 and 17 years of age.

CLASS 41

\$1,500 SMALL JUNIOR HUNTER, 16 & 17, UNDER SADDLE

CLASSES 42, 43 (HANDY)

\$2,000 SMALL JUNIOR HUNTER, 16 & 17

CLASS 44

\$2,500 SMALL JUNIOR HUNTER, 16 & 17, STAKE

CLASS 45

SMALL JUNIOR HUNTER, 16 & 17, CHAMPION AND RESERVE CHAMPION

Trophy and Champion Ribbon; Reserve Champion Ribbon

CLASS 66

OVERALL SMALL JUNIOR HUNTER CHAMPION

Trophy and Champion Ribbon

**\$8,000 LARGE JUNIOR HUNTER — 16.0 hands and over,
Riders 15 years of age and under.**

CLASS 51

\$1,500 LARGE JUNIOR HUNTER, 15 & UNDER, UNDER SADDLE

CLASSES 52, 53 (HANDY)

\$2,000 LARGE JUNIOR HUNTER, 15 & UNDER

CLASS 54

\$2,500 LARGE JUNIOR HUNTER, 15 & UNDER, STAKE

CLASS 55

LARGE JUNIOR HUNTER, 15 & UNDER, CHAMPION AND RESERVE CHAMPION

Trophy and Champion Ribbon; Reserve Champion Ribbon

**\$8,000 LARGE JUNIOR HUNTER — 16.0 hands and over,
Riders 16 and 17 years of age.**

CLASS 61

\$1,500 LARGE JUNIOR HUNTER, 16 & 17, UNDER SADDLE

CLASSES 62, 63 (HANDY)

\$2,000 LARGE JUNIOR HUNTER, 16 & 17

CLASS 64

\$2,500 LARGE JUNIOR HUNTER, 16 & 17, STAKE

CLASS 65

LARGE JUNIOR HUNTER, 16 & 17, CHAMPION AND RESERVE CHAMPION

Trophy and Champion Ribbon; Reserve Champion Ribbon

CLASS 67

OVERALL LARGE JUNIOR HUNTER CHAMPION

Trophy and Champion Ribbon

CLASS 68

DEVON GRAND JUNIOR HUNTER CHAMPIONSHIP

Awarded to the horse which has acquired the greatest number of points in the Junior Hunter Division. Ties broken under HU139.

Trophy and Grand Champion Ribbon

78—BEST CHILD RIDER ON A HORSE TROPHY

To be awarded to the junior exhibitor entered and showing in the Hunter Seat Equitation and/or Junior Hunter Sections, who in the opinion of the judges is the best rider.

Riders may compete in EITHER Class 77 (pony) or Class 78 (horse), but not both.

Entry Fee \$35

Trophy and Four Ribbons per class

**Entries Must be Postmarked prior to
Midnight Monday, March 30th**

EXHIBITION CLASSES

NOT RECOGNIZED BY USEF

CLASSES 71, 72

LEADLINE

To be ridden by a child who has not reached his or her 4th or 6th birthday as of Dec. 1 of the preceding year. To be judged on manners and suitability of pony to rider. Children riding in this class are not eligible to compete in any other class. Post entries accepted up to 10:00 a.m. the day of class. One handler per entry. Handler must be at least 18 years of age. **Please list date of birth of competitor! Proper headgear required.**

Entry Fee \$50

After 5/1—\$75

On Day of Class—\$100

71—LEADLINE UNDERFOUR YEARS

72—LEADLINE FOUR AND FIVE YEARS

Trophy to Winner, Ribbons to All

CLASS 73

HUNT TEAMS—PONIES

Open to ponies who have competed in one of the regular pony hunter sections. Teams of three ponies, shown over a course in the ring, one to follow the other at a safe hunting distance. Combined ownership permitted. Judged on performance, suitability, manners, uniformity and appearance as a team. Fences: 2'3" for ponies not exceeding 12.2; 2'6" for ponies not exceeding 13.2 and 3' for ponies over 13.2. Pony and/or rider may only compete on one team. **Post entries only.** Accepted until 3:00 p.m. Saturday.

Entry Fee \$120 per team paid at time of entry

Trophies and Nine Sets of Six Ribbons

CLASS 74

HUNT TEAMS—HORSES

Teams of three, shown over a course in the ring one to follow the other at a safe hunting distance. Combined ownership permitted. Judged on performance, suitability, manners, uniformity and appearance as a team. Jumps approximately 3'6". Horses and/or rider may only compete on one team. **Post entries only.** Accepted until 5:00 p.m. Saturday. Ponies not entered elsewhere in this show may compete if ridden by an adult.

Entry Fee \$120 per team paid at time of entry

Trophy and Three Sets of Six Ribbons

CLASS 75

FAMILY CLASS

"Family" defined for purposes of this class as husband, wife, parent, step-parent, child, brother, step-child, sister, half brother and sister, aunt, uncle, niece, nephew, grandmother, grandfather, grandchildren, and in-laws of the same relation as stated above. In all cases the word "family" is to be used rather than a list of specific relations. Horses and/or ponies to be shown under saddle at a walk, trot and canter. Manners and suitability of mounts to riders especially to be considered. **Post entries accepted until 5:00 p.m. Saturday.**

Entry Fee \$50 per family

After 5/1—\$75

Trophy and Six Sets of Six Ribbons

CLASS 76

PARENT AND CHILD CLASS

To be ridden by parent and child, over jumps not to exceed 3 feet. Each horse or pony limited to one team. Performance, 75%; suitability of mounts to riders, 25%. **Post entries accepted until 5:00 p.m.. Saturday.**

Entry Fee \$50 per team entry

After 5/1—\$75

Trophy and Two Sets of Six Ribbons

EQUITATION DIVISION

If there are 50 or more entries prior to the start of any class, the class will be divided. WIHS Equitation will be run as a California Split, per WIHS Rules.

CLASS 81

Pessoa/USEF HUNTER SEAT MEDAL CLASS

Entry Fee \$130

Trophy and Ten Ribbons

CLASS 82

A.S.P.C.A. MACLAY HORSEMANSHIP CLASS

Entry Fee \$130

Trophy and Ten Ribbons

CLASS 83

WIHS EQUITATION CLASSIC - JUMPER PHASE

Entry Fee \$130

Trophy and Ten Ribbons

CLASS 84

Platinum Performance/USEF SHOW JUMPING TALENT SEARCH

Entry Fee \$130

Trophy and Ten Ribbons

CLASS 85

R.W. "RONNIE" MUTCH EQUITATION CHAMPIONSHIP HIGH POINT AWARD

To be awarded to the rider who accrues the most points in classes 81, 82, 83 and 84. All classes to count 7, 5, 4, 3, 2, 1.

1st, Challenge Trophy and Championship Ribbon



HOTEL & CONFERENCE CENTER

610.337.1800

www.starwoodhotels.com/parkridge

- *265 Guest Rooms and Suites*
- *Mad Anthony's Sports Tavern*
- *Coopermill Harvest Restaurant*
- *15,000 square feet of flexible meeting space*
- *Valley Forge Ballroom with room for 400 guests*
- *Elegant Weddings*
- *Shopping, Dining, and History*

480 N. Gulph Road King of Prussia, PA 19406



HUNTER BREEDING SECTION

ENTRY FEE \$75 PER CLASS

NO SENIOR WEEK STALLS AVAILABLE

One Handler Per Entry/One Entry Per Handler

All breeding classes to be judged on conformation, quality, substance and suitability to become or, in the case of sires and dams, apparent ability to produce or beget hunters. Transmissible unsoundness only to be considered in cases of sires and dams or prospective sires or dams. Handler changes must be done in the horse show office prior to the start of the class. Horses to be moved on the line.

CLASSES 271 & 272

YEARLING, THOROUGHBRED/UNREGISTERED THOROUGHBRED—SUITABLE TO BECOME HUNTER

Trophy and Eight Ribbons

271—COLTS AND GELDINGS

272—FILLIES

CLASSES 273 & 274

YEARLING, OTHER THAN THOROUGHBRED—SUITABLE TO BECOME HUNTER

Trophy and Eight Ribbons

273—COLTS AND GELDINGS

274—FILLIES

CLASSES 275 & 276

TWO YEAR OLD, THOROUGHBRED/UNREGISTERED THOROUGHBRED—SUITABLE TO BECOME HUNTER

Trophy and Eight Ribbons

275—COLTS AND GELDINGS

276—FILLIES

CLASSES 277 & 278

TWO YEAR OLD, OTHER THAN THOROUGHBRED—SUITABLE TO BECOME HUNTER

Trophy and Eight Ribbons

277—COLTS AND GELDINGS

278—FILLIES

CLASS 279

THREE YEAR OLD THOROUGHBRED/UNREGISTERED THOROUGHBRED—SUITABLE TO BECOME HUNTER

Trophy and Eight Ribbons

CLASSES 280 & 281

THREE YEAR OLD, OTHER THAN THOROUGHBRED—SUITABLE TO BECOME HUNTER

Trophy and Eight Ribbons

280—STALLIONS AND GELDINGS

281—MARES

CLASS 282

MARE—FOUR YEAR OLDS OR OLDER, SUITABLE TO PRODUCE HUNTERS

Trophy and Eight Ribbons

PENNSYLVANIA BRED BREEDING SECTION

Thoroughbred or Non-Thoroughbred. Bred in Pennsylvania. Pennsylvania bred is defined as an animal that has been foaled in Pennsylvania.

ENTRY FEE \$75 PER CLASS

CLASSES 283 & 284 PENNSYLVANIA BRED YEARLING

**283—COLTS AND GELDINGS
284—FILLIES**

Trophy and Eight Ribbons

CLASSES 285 & 286 PENNSYLVANIA BRED TWO YEAR OLD

**285—COLTS AND GELDINGS
286—FILLIES**

Trophy and Eight Ribbons

CLASS 287 PENNSYLVANIA BRED THREE YEAR OLD

Trophy and Eight Ribbons

CLASS 288 BEST YEARLING

To be selected from the 1st place winners of classes 271, 272, 273, 274, 283 & 284.
Trophy and Champion Ribbon; Reserve Champion Ribbon

CLASS 289 BEST PENNSYLVANIA BRED HORSE

To be selected from the 1st place winners of classes 283, 284, 285, 286, & 287.
Trophy and Champion Ribbon; Reserve Champion Ribbon

CLASS 290 BEST YOUNG HORSE

To be selected from ribbon winners in classes 271 - 287. All ribbon winners may show back.

To Be Presented Thursday Evening.

Trophy and Champion Ribbon; Reserve Champion Ribbon

CLASS 291 LEADING HANDLER AWARD

Presented to the handler who accrues the most points based on ribbons won in classes 271 through 282. Point values 5, 3, 2, 1.

To Be Presented Thursday Evening.

No Entry Fee

Trophy and Champion Ribbon

CLASS 292 LEADING PA HANDLER AWARD

Presented to the handler who accrues the most points based on ribbons won in classes 283 through 287. Point values 5, 3, 2, 1.

No Entry Fee

Trophy and Champion Ribbon

CLASS 293

AMATEUR HANDLERS CLASS

Open to handlers who are no longer eligible to compete as a Junior Exhibitor. All handlers must possess current amateur certification issued by USEF. Horses to be shown in hand and moved on the line. Class to be judged 75% on presentation of horse and handler and 25% on conformation, way of moving and soundness. Horses to be walked and/or jogged before being moved to the line in order of preference. Horses of any age, sex or breed are eligible. Horses showing in any section or division at this show are ineligible, with the exception of horses showing in the breeding division and/or Class 294, Young Hunter Under Saddle. Points not to count for USEF Horse of the Year Award, Best Young Horse Class or Leading Handler Award.

Entry Fee: \$75.00

CLASS 294

YOUNG HUNTERS UNDER SADDLE—PENNSYLVANIA REGISTERED

Five year olds and under suitable to become hunters. Open to horses who are registered with the PHSA and whose owners are members. To be judged at walk, trot, canter and soundness, not to jump. Conformation, 50%; performance, manners and way of going 50%. Horses must be stripped for conformation.

Entry Fee \$75

Trophy and Eight Ribbons

THE DEVON HORSE SHOW

is a Regular Member of the

PENNSYLVANIA HORSE SHOW ASSOCIATION

PHSA classification and High Score Award points will be awarded on the same basis in the various divisions as specified by USEF. Individual members are entitled to the annual PHSA High Score Awards only after they have paid their dues and their horses have been registered with the PHSA.

Apply to: Diane Boram

237 Brookside Rd., Norristown, PA 19401 - 610-277-0760

The Pennsylvania Horse Show Association will be offering the following classes which will count towards the end of the year High Score Awards:

*Small Pony Hunter
Medium Pony Hunter
Large Pony Hunter
Green Pony Hunter
Junior Hunter*

*Children's Hunter—
Horses-Pony
Pony Equitation
Green Working Hunter
Adult Amateur Hunter*

*Amateur Owner Hunter
Pre-Green Hunter
Breeding Division
Young Hunter U/S*

HUNTER PONY BREEDING SECTION

ENTRY FEE \$75 PER CLASS
NO DAILY STALLS AVAILABLE

A Member Event of the National Pony Hunter Breeding Championship Series

To be shown in hand. All classes to be judged on conformation, type, way of moving and soundness.

CLASS 301

HUNTER PONY—FOALS

Trophy and Eight Ribbons

CLASSES 302 & 303

HUNTER PONY—YEARLINGS

Trophy and Eight Ribbons

302—COLTS AND GELDINGS

303—FILLIES

CLASSES 304 & 305

HUNTER PONY—TWO YEAR OLDS

Trophy and Eight Ribbons

304—COLTS AND GELDINGS

305—FILLIES

CLASSES 306 & 307

HUNTER PONY—THREE YEAR OLDS

Trophy and Eight Ribbons

306—STALLIONS AND GELDINGS

307—MARES

CLASS 308

HUNTER PONY—PRODUCE OF DAM

Two Sets of Six Ribbons

CLASS 309

HUNTER PONY—GET OF SIRE

Three Sets of Six Ribbons

CLASSES 310 & 311

HUNTER PONY—CHAMPION AND RESERVE

To be selected from 1st and 2nd place ribbon winners in classes 301 through 307.

Trophy and Champion Ribbon; Reserve Champion Ribbon

310—COLT, STALLION OR GELDING

311—FILLY OR MARE

CLASS 312

BEST YOUNG PONY

To be selected from 1st and 2nd place ribbon winners in classes 310 & 311.

Challenge Trophy and Grand Champion Ribbon; Reserve Grand Champion Ribbon

CLASS 313

PBHA TROPHY

Awarded to the Highest Scoring PA Bred Pony.

Challenge Trophy and Grand Champion Ribbon; Reserve Grand Champion Ribbon

\$10,000 GREEN CONFORMATION HUNTER SECTION

The Committee will limit the number of entries accepted in this section. See page 3.

A Green Conformation Hunter is a horse of any age that is in his first or second year of showing in any class at Regular Member Shows of USEF or of Equine Canada that requires horses to jump 3'6" or higher, equitation classes included. In classes over fences, first year horses to jump 3'6", second year horses to jump 3'9". In classes under saddle, horses are not required to hand gallop.

All classes to be judged 60% on performance and soundness and 40% on conformation, except where otherwise noted. Full points in all classes except the Model which is half points.

**THE ENTRY FEE FOR CLASSES 101-106 IS \$950
INDIVIDUAL CLASSES MAY NOT BE ENTERED.**

CLASS 101 GREEN CONFORMATION HUNTER—MODEL

Shown in hand. To be judged on conformation, way of moving and soundness. No additional entry fee.

CLASS 102 \$1,500 GREEN CONFORMATION HUNTER UNDER SADDLE

CLASSES 103, 104, 105 (HANDY) \$2,000 GREEN CONFORMATION HUNTER

CLASS 106 \$2,500 GREEN CONFORMATION HUNTER STAKE

CLASS 107 GREEN CONFORMATION HUNTER CHAMPION AND RESERVE CHAMPION Trophy and Champion Ribbon; Reserve Champion Ribbon

Minors who do not have a valid driver's license which allows them to operate a motorized vehicle in the state in which they reside will not be permitted to operate a motorized vehicle of any kind including, but not limited to, golf carts, motorcycles, scooters, or farm utility vehicles on the competition grounds of licensed competitions. Minors who have a valid temporary license may operate the above described motorized vehicles as long as they are accompanied by an adult with a valid driver's license. Violations of this rule will be cause for sanctions against the parent(s), guardian(s) and/or trainer(s) who are responsible for the child committing the offense. Penalties may include exclusion of the child, parent(s), guardian(s), and/or trainer(s) from the competition grounds for the remainder of the competition and charges being filed against any of the above individuals in accordance with Rule 6. Wheelchairs and other mobility assistance devices for individuals with disabilities are exempt from this rule.

\$8,000 REGULAR CONFORMATION HUNTER SECTION

The committee will limit the number of entries accepted in this section. See page 3.

A Regular Hunter is a horse of any age not restricted by previous showing in any division. In classes over fences, horses to jump 4'. All classes to be judged 75% on performance and soundness and 25% on conformation, except where otherwise noted. Full points in all classes.

**ENTRY FEE FOR CLASSES 111-116 IS \$760
INDIVIDUAL CLASSES MAY NOT BE ENTERED.**

CLASS 111 REGULAR CONFORMATION HUNTER—MODEL

Shown in hand. To be judged on conformation, way of moving and soundness. No additional entry fee.

CLASS 112 \$1,500 REGULAR CONFORMATION HUNTER UNDER SADDLE

CLASSES 113 (HANDY), 114, 115 \$1,500 REGULAR CONFORMATION HUNTER

CLASS 116 \$2,000 REGULAR CONFORMATION HUNTER STAKE

CLASS 117 REGULAR CONFORMATION HUNTER CHAMPION AND RESERVE CHAMPION Trophy and Champion Ribbon; Reserve Champion Ribbon

Federation Entry Agreement

By entering a Federation-licensed Competition and signing this entry blank as the Owner, Lessee, Trainer, Manager, Agent, Coach, Driver, Rider, Handler, Vaultor or Longeur and on behalf of myself and my principals, representatives, employees and agents, I agree that I am subject to the Bylaws and Rules of The United States Equestrian Federation, Inc. (the "Federation") and the local rules of the competition. I agree to be bound by the Bylaws and Rules of the Federation and the competition. I will accept as final the decision of the Hearing Committee on any question arising under the Rules, and agree to release and hold harmless the competition, the Federation, their officials, directors and employees for any action taken under the Rules. I represent that I am eligible to enter and/or participate under the rules, and every horse I am entering is eligible as entered. I also agree that as a condition of and in consideration of acceptance of entry, the Federation and/or the competition may use or assign photographs, videos, audios, cable-casts, or other likenesses of me and my horse taken during the course of the competition for the promotion, coverage or benefit of the competition, sport, or the Federation. Those likenesses shall not be used to advertise a product and they may not be used in such a way as to jeopardize amateur status. I hereby expressly and irrevocably waive and release any rights in connection with such use, including any claim to compensation, invasion of privacy, right of publicity, or to misappropriation. The construction and application of Federation rules are governed by the State of New York, and any action instituted against the Federation must be filed in New York State. See GR908.4.

\$10,000 FIRST YEAR GREEN HUNTER SECTION

The committee will limit the number of entries accepted in this section. See page 3.

A First Year Green Hunter is a horse of any age that is in his first year of showing in any classes, whether judged or not, at Regular member shows of USEF or of Equine Canada that requires horses to jump 3'6" or higher, equitation classes included. In classes over fences, horses to jump 3'6". In classes under saddle horses are not required to hand gallop.

All classes to be judged on performance and soundness, unless otherwise noted. Full points in all classes.

**ENTRY FEE FOR CLASSES 121-125 IS \$950
INDIVIDUAL CLASSES MAY NOT BE ENTERED**

CLASS 121

\$1,500 1st YEAR GREEN HUNTER UNDER SADDLE

CLASSES 122, 123, 124 (HANDY)

\$2,000 1st YEAR GREEN HUNTER

CLASS 125

\$2,500 1st YEAR GREEN HUNTER STAKE

CLASS 126

1st YEAR GREEN HUNTER CHAMPION AND RESERVE CHAMPION

Trophy and Champion Ribbon; Reserve Champion Ribbon

\$10,000 SECOND YEAR GREEN HUNTER SECTION

The Committee will limit the number of entries accepted in this section. See page 3.

A Second Year Green Hunter is a horse of any age that is in his second year of showing in any classes, whether judged or not, at Regular member shows of USEF or of Equine Canada that requires horses to jump 3'9" or higher, equitation classes included. In classes over fences, horses to jump 3'9". In classes under saddle, horses are not required to hand gallop.

All classes to be judged on performance and soundness, unless otherwise noted. Full points in all classes.

**ENTRY FEE FOR CLASSES 131-135 IS \$950
INDIVIDUAL CLASSES MAY NOT BE ENTERED.**

CLASS 131

\$1,500 2nd YEAR GREEN HUNTER UNDER SADDLE

CLASSES 132, 133, 134 (HANDY)

\$2,000 2nd YEAR GREEN HUNTER

CLASS 135

\$2,500 2nd YEAR GREEN HUNTER STAKE

CLASS 136

2nd YEAR GREEN HUNTER CHAMPION AND RESERVE CHAMPION

Trophy and Champion Ribbon; Reserve Champion Ribbon

\$10,000 REGULAR WORKING HUNTER SECTION

The committee will limit the number of entries accepted in this section. See page 3.

A Regular Working Hunter is a horse of any age not restricted by previous showing in any division. In classes over fences, jumps at 4'.

All classes to be judged on performance and soundness. Full points in all classes.

**ENTRY FEE FOR CLASSES 141-145 IS \$950
INDIVIDUAL CLASSES MAY NOT BE ENTERED**

**CLASS 141
\$1,500 REGULAR WORKING HUNTER UNDER SADDLE**

**CLASSES 142, 143, 144 (HANDY)
\$2,000 REGULAR WORKING HUNTER**

**CLASS 145
\$2,500 REGULAR WORKING HUNTER STAKE**
Formal Attire requested.

**CLASS 146
REGULAR WORKING HUNTER CHAMPION AND RESERVE CHAMPION**
Trophy and Champion Ribbon; Reserve Champion Ribbon

**CLASS 147
REGULAR WORKING HUNTER LEADING LADY RIDER AWARD**
Trophy and Champion Ribbon

**CLASS 148
LEADING MARE**
This award will be presented to the mare who has accumulated the greatest number of points in one or more of the following sections throughout the show (Model classes not to count.).

**GREEN CONFORMATION HUNTER
REGULAR CONFORMATION HUNTER
GREEN WORKING HUNTER
REGULAR WORKING HUNTER**

Trophy and Championship Ribbon

**CLASS 149
DEVON GRAND HUNTER CHAMPIONSHIP**
This award will be presented to the horse which has accumulated the greatest number of points in one of the following sections throughout the show. Model classes not to count. A section must include a minimum of eight entries to be considered for this award.

**GREEN CONFORMATION HUNTER
REGULAR CONFORMATION HUNTER
GREEN WORKING HUNTER
REGULAR WORKING HUNTER**

In the case of a tie, the winning horse will be decided on the basis of HU139.

Trophy and Champion Ribbon

**CLASS 150
DEVON LEADING HUNTER RIDER**
This award will be presented to the rider who has accumulated the greatest number of points in one or more of the following sections throughout the show (Model classes not to count.). If a rider rides more than one horse in a class, only the points on the top placed horse will count.

**GREEN CONFORMATION HUNTER
REGULAR CONFORMATION HUNTER
GREEN WORKING HUNTER
REGULAR WORKING HUNTER**

Trophy and Devon Jacket

\$16,000 AMATEUR OWNER HUNTER SECTION

The Committee will limit the number of entries accepted in this section. See page 3. In each section riders will be limited to 2 horses. Entries will be qualified in only the age section entered and may not change sections for any reason.

To be ridden by an Amateur owner or Amateur member of the owner's family who is no longer eligible to compete as a Junior Exhibitor. Leased horses are not eligible and multiple ownership is not permitted unless all owners are members of the same family. An Amateur who rides for a person outside the family may not ride in a class restricted to Amateur-Owners in the same show, HU105.

All Amateur-Owner riders must show Amateur certification.

In all classes over fences jumps at 3'6". Classes to be judged on performance and soundness except where otherwise noted. Manners and suitability shall be emphasized and extreme speed shall be penalized. Full points in all classes.

**THE ENTRY FEE FOR CLASSES 151-155, OR 161-165 IS \$800
INDIVIDUAL CLASSES MAY NOT BE ENTERED**

\$8,000 AMATEUR OWNER HUNTER—18 to 35 years of age

CLASS 151

\$1,500 AMATEUR OWNER HUNTER UNDER SADDLE—18 to 35

CLASSES 152, 153, 154 (HANDY)

\$1,500 AMATEUR OWNER HUNTER—18 to 35

CLASS 155

\$2,000 AMATEUR OWNER HUNTER STAKE—18 to 35

CLASS 156

AMATEUR OWNER CHAMPION AND RESERVE CHAMPION—18 to 35

Trophy and Champion Ribbon; Reserve Champion Ribbon

\$8,000 AMATEUR OWNER HUNTER—OVER 35 years of age

CLASS 161

\$1,500 AMATEUR OWNER HUNTER UNDER SADDLE—OVER 35

CLASSES 162, 163, 164 (HANDY)

\$1,500 AMATEUR OWNER HUNTER—OVER 35

CLASS 165

\$2,000 AMATEUR OWNER HUNTER STAKE—OVER 35

CLASS 166

AMATEUR OWNER HUNTER CHAMPION AND RESERVE CHAMPION—OVER 35

Trophy and Champion Ribbon; Reserve Champion Ribbon

CLASS 167**DEVON GRAND AMATEUR OWNER HUNTER CHAMPIONSHIP**

Awarded to the horse that has acquired the greatest number of point in the Amateur Owner Hunter Section. Ties broken under HU139.

Trophy and Grand Champion Ribbon

CLASS 168**DEVON LEADING AMATEUR OWNER HUNTER RIDER**

Awarded to the rider who has accumulated the greatest number of points on one horse in the Amateur Owner Hunter Section.

Trophy and Grand Champion Ribbon

USHJA INTERNATIONAL HUNTER DERBY

CLASS 199**\$10,000 ASG SOFTWARE SOLUTIONS/USHJA INTERNATIONAL HUNTER DERBY****Presented by Dietrich Insurance, Featuring Walsh Harness and Saddlery**

To be run under a Two Round format. Horses will jog for soundness prior to Round One. Any horse show only in the hunter derby will be charged \$150 for a Saturday and Sunday evening stall. Junior horses competing in the Hunter Derby, will be charged an additional \$50 for layover.

Round One is open to 20 horses, accepted on first come first served basis, horses qualified and competing at The Devon Horse Show will be given preference. Riders are limited to two horses. Round Two is open to the top 12 scoring horses from Round One.

Round One: To be shown over a Hunter Classic type course with a minimum of 10 fences 3'6" to 3'9" in height, with four "option" fences set at 4' in height.

Round Two: To be shown over a Handy Hunter type course. Fences at 3'6" to 3'9" in height, with four "option" fences set at 4' in height. To be judged on style, brilliance and handiness. A maximum of 20 bonus points may be awarded by the judges to each horse rider combination for handiness of round.

Formal Attire Required.

Entry Fee \$500

**1st, Trophy and \$3000; 2nd, \$2200; 3rd, \$1500; 4th, \$1000; 5th, \$600;
6th, \$500; 7th, \$400; 8th, \$300; 9th, \$300; 10th, \$200**

**Entries Must be Postmarked prior to
Midnight Monday, March 30th**

**Again in 2009 - Exhibitor receptions will honor
Junior Weekend participants, along with Hunter/Jumper,
Saddlebred/Harness and Coaching.**

LOCAL HUNTER SECTION

Horses to be owned by exhibitors living within a 40 mile radius of the Devon Show grounds, based on owners zip code. Owner listed on the entry blank must be the owner listed on the horses USHJA Registration Papers or provide proof of ownership or lease. Judges are to select the horses apparently the most agreeable mounts to hounds; the main consideration being even hunting pace, manners, way of going and style of jumping. Ticks will not be scored unless the fault of bad jumping. Conformation will not be considered, but hunting soundness is required. Jumps 3'3". **Any horse and/or rider competing in the Local Hunter Section may not compete in any qualifying hunter class over fences, with the exception of Class 187, or any jumper class.**

If the number of entries in this section exceeds 50, this section will be divided by every other number and the prize money will be doubled.

**THE ENTRY FEE FOR CLASSES 181 - 184 IS \$250
INDIVIDUAL CLASSES IN THIS SECTION MAY NOT BE ENTERED
NO WEEKLY STALLS AVAILABLE**

CLASS 181

\$165 LOCAL HUNTER UNDER SADDLE

To be shown at a walk, trot and canter both ways of the ring. Light contact with horse's mouth is required. Horses may be asked to hand gallop collectively one way of the ring at the judge's discretion, but never more than eight at one time. Judged on performance and soundness. Martingales not permitted.

CLASS 182

\$165 LOCAL HUNTER

Judged on performance and soundness. Horses not to jog.

CLASS 183

\$165 LOCAL HUNTER—OWNER TO RIDE

Judged on performance and soundness. Horses not to jog. Every competitor must be a junior exhibitor or amateur and the owner, or a junior/amateur member of the owner's family. Combined membership is not permitted unless all owners are members of the same family. Leased horses are not eligible. See GR106.

CLASS 184

\$250 LOCAL HUNTER STAKE

Judged on performance and soundness. Horse not to jog.

CLASS 185

LOCAL HUNTER CHAMPION AND RESERVE CHAMPION

Trophy and Champion Ribbon; Reserve Champion Ribbon

CLASS 186

LOCAL HUNTER SPORTSMANSHIP AWARD

CLASS 187

\$200 WORKING HUNTER—FOX HUNTING FIELD PERFORMANCE

Shown in the ring, no jumps over 3'6", arranged to represent obstacles ordinarily encountered in fox hunting. Judged on what judges consider the most preferable ride in the fox hunting field. No Points. *To be eligible for this class, horses must have been entered and shown in at least one Local Hunter class in this show. Post entries accepted until 3:00 p.m. Friday.*

Entry Fee \$75

LADIES HUNTER SIDE SADDLE SECTION

Riders are limited to one (1) horse in this section with the exception of class 171, where riders are limited to two (2) horses.

To be ridden by ladies who are no longer eligible to compete as junior exhibitors. Stallions and ponies are not permitted.

CLASS 171

\$165 LADIES HUNTER SIDE SADDLE OVER FENCES

To be shown over a course of at least 8 fences, 3' in height. No in and out to be used.

Entry Fee \$50

CLASS 172

\$165 LADIES HUNTER SIDE SADDLE UNDER SADDLE

To be shown at a walk, trot and canter both ways of the ring in formal hunting attire with appointments. To be judged on performance and soundness with emphasis on manners 75%; formal hunting attire, appointments and general overall appearance of horse and rider 25%. Judges should give particular consideration to quality and condition of tack.

Entry Fee \$50

CLASS 173

\$165 LADIES HUNTER SIDE SADDLE HUNTER HACK

To be shown at a walk, trot and canter both ways of the ring. Judges may ask for a hand gallop, but no more than eight to hand gallop at one time. To jump two fences at 2'6". To be judged on performance and soundness with an emphasis on manners. Under Saddle performance to count 50%, Over Fences performance to count 50%.

Entry Fee \$50

CLASS 174

LADIES HUNTER SIDE SADDLE CHAMPION AND RESERVE CHAMPION

Awarded to the two horses which have earned the most points in classes 171-173. In case of a tie the horses will hack off to determine the Champion and/or Reserve Champion.

Trophy and Champion Ribbon; Reserve Champion Ribbon

Life, senior active and junior active members shall be eligible to participate in all classes at Regular Competitions, Eventing Competitions at the Preliminary Level or above and Combined Driving Competitions at the Advanced Level, Dressage, Reining and Vaulting Competitions and Endurance Rides. A nonmember may participate as a handler, rider, driver, owner, lessee, agent, coach or trainer at Regular Competitions, Eventing Competitions, Dressage Competitions, Reining Competitions and Combined Driving Competitions upon payment of a \$30 nonmember registration fee. Participants in the following classes are exempted from the Requirements of this rule: 1) leadline; 2) exhibitions; 3) games and races; 4) classes for 4-H members; 5) walk trot and academy classes (academy classes are classes limited to horses used regularly in a lesson program); 6) USDF introductory level tests, pas de deux and quadrille classes; 7) NRHA Endorsed Reining Competitions. 8) Opportunity classes, 9) citizens of other nations who have proof, in English, of current membership in good standing of their own National Federation, 10) USEA beginner novice division; and 11) assistant handlers in Dressage Sport Horse Breeding classes. EC 7/21/08 Effective 12/1/08)

Prize Money Purses will be distributed as follows in the Jumper Division.

PURSE	1st	2nd	3rd	4th	5th	6th	7th	8th
\$1,000	280	200	120	100	90	80	70	60
1,500	410	270	220	170	140	110	90	90
2,500	700	460	380	300	240	170	125	125
3,750	1000	700	575	425	375	275	225	175
7,500	2100	1500	900	750	675	600	525	450
10,000	2800	2000	1200	1000	900	800	700	600
15,000	4250	3000	1800	1500	1300	1200	1050	900
20,000	5600	4000	2400	2000	1800	1600	1400	1200



This show offers one or more classes that are recognized by the **North American League** for year-end finals.

In order for riders to receive credit, they must be a current member. Membership is valid for the qualifying year (Sept. 1 to Aug. 31) and entitles a rider to show one or more horses in any of the accredited classes. Finals are held at the Pennsylvania National Horse Show. Members will receive newsletters with standings and upcoming events.

Please complete and mail the application with payment to:
 Ryegate Show Services
 1298 Royal Road
 Annville, PA 17003-2226
 Tel: (717) 867-5643 Fax: (717) 867-2174
 www.ryegate.com e-mail: NAL@ryegate.com

Today's Date _____ Valid for the Qualifying year **2009**
 Please enroll me as a member of the North American League
 Rider's Name _____
 Address _____
 City _____ State _____ Zip _____
 Telephone Day (___) _____ Evening (___) _____
 Social Security # _____ E-mail _____
 Date of birth: ___ / ___ / ___ USEF Memb # _____
 Payment of \$35.00 enclosed Please bill my MasterCard VISA
 Account # _____ / _____ / _____ / _____ Exp. ___ / ___
 Cardholder's Name _____
 Address _____
 City _____ State _____ Zip _____
 Cardholder's Signature _____

JUMPER DIVISION

NOMINATING FEE: \$150

Unless otherwise specified, horses tied for other than first place will be placed based on their time in the first round. The time allowed for all classes will be based on 350 meters per minute. Exception, classes 245 & 248 will be based on 375 meters per minute.

\$22,500 JUNIOR JUMPER SECTION

The Committee will limit the number of entries accepted in this section. See page 3. No more than two horses per rider, as originally entered, will be accepted in each section. (You may enter as many horses as you wish).

**ENTRY FEE FOR CLASSES 201-203 IS \$850
INDIVIDUAL CLASSES MAY NOT BE ENTERED**

CLASS 201

\$3,750 JUNIOR JUMPER, TIME FIRST JUMP-OFF

Table II, Sec. 2(b) Fences 1.40m

CLASS 202

\$3,750 JUNIOR JUMPER, GAMBLER'S CHOICE

JP149 Fences 1.40m, except Joker fence.

CLASS 203

\$15,000 THE SHOW JUMPING HALL OF FAME JUNIOR JUMPER CLASSIC

Current standings and schedules for the SJHOF Classic Series are available through www.ryegate.com or www.showjumpinghalloffame.net.

Table II, Sec. 2(a) - Only running martingales, used in the conventional manner, are permitted. Standing martingales, draw reins or restricted martingales are prohibited. All horses must be on the grounds 24 hours prior to the scheduled start of the class. Fences 1.45m

**1st, Trophy and \$4,500; 2nd, \$3,000; 3rd, \$1,750; 4th, \$1,500; 5th, \$1,250;
6th, \$750; 7th, \$750; 8th, \$500; 9th, \$500; 10th, \$500**

CLASS 204

JUNIOR JUMPER CHAMPIONSHIP

Awarded to the two horses having the highest number of points in this section. In case of a tie, the Championship will be awarded to the competitor placing higher in Class 203. Ribbons won in Classes 201 & 202 to count; 10-6-4-2-1-1/2. Ribbons won in class 203 to count 15-9-6-3-2-1.

Trophy and Champion Ribbon; Reserve Champion Ribbon

CLASS 205

LEADING JUNIOR JUMPER RIDER AWARD

Points will be awarded to the rider receiving the greatest number of points on one horse. Points will be awarded in Classes 201 & 202: 10-6-4-2-1-1/2. Points will be awarded in Class 203: 15-9-6-3-2-1.

Trophy and Champion Ribbon

CLASS 206

SHALANNOSTYLE OF RIDING AWARD

To be awarded to the Junior Jumper Rider who best exemplifies the American style of equitation, and the respectful, dignified, courteous and workmanlike manner of a true sportsman.

Trophy and Champion Ribbon

\$22,500 AMATEUR OWNER JUMPER SECTION

The Committee will limit the number of entries accepted in this section. See page 3. No more than two horses per rider, as originally entered, will be accepted in each section. (You may enter as many horses as you wish).

To be ridden by an amateur-owner or amateur member of the owner's family who is no longer eligible to compete as a Junior Exhibitor. Leased horses are not eligible and multiple ownership is not permitted unless all owners are members of the same family.

**ENTRY FEE FOR CLASSES 211 - 213 IS \$850
INDIVIDUAL CLASSES MAY NOT BE ENTERED**

CLASS 211

\$3,750 AMATEUR OWNER JUMPER—TIME FIRST JUMP-OFF

Table II, Sec. 2(b) Fences 1.40m

CLASS 212

\$3,750 AMATEUR OWNER JUMPER—ACCUMULATOR

FEI Article 269 (for scoring purposes only) Fences 1.40m

CLASS 213

\$15,000 THE SHOW JUMPING HALL OF FAME

AMATEUR OWNER JUMPER CLASSIC—TIME FIRST JUMP-OFF

Current standings and schedules for the SJHOF Classic Series are available through www.ryegate.com or www.showjumpinghalloffame.net.

Table II, Sec. 2(a). Only running martingales, used in the conventional manner, are permitted. Standing martingales, draw reins or restricted martingales are prohibited. All horses must be on the grounds 24 hours prior to the scheduled start of the class.

Horses competing in this class may not compete in Classes 246 or 249.

Fences 1.45m

**1st, Trophy and \$4,500; 2nd, \$3,000; 3rd, \$1,750; 4th, \$1,500; 5th, \$1,250;
6th, \$750; 7th, \$750; 8th, \$500; 9th, \$500; 10th, \$500**

CLASS 214

AMATEUR OWNER JUMPER CHAMPION AND RESERVE CHAMPION

Awarded to the two horses having the highest number of points in this section. In case of tie, the Championship will be awarded to the competitor placing higher in Class 213. Ribbons won in Classes 211 & 212 to count; 10-6-4-2-1-1/2. Ribbons won in class 213 to count 15-9-6-3-2-1.

Trophy and Champion Ribbon; Reserve Champion Ribbon

CLASS 215

LEADING AMATEUR OWNER JUMPER RIDER AWARD

Points will be awarded to the rider receiving the greatest number of points on one horse. Points will be awarded in Classes 211 & 212: 10-6-4-2-1-1/2. Points will be awarded in Class 213: 15-9-6-3-2-1.

Trophy and Champion Ribbon

\$4,500 PONY JUMPER SECTION

The Committee will limit the number of entries accepted in this section. See page 3. Pony Jumpers will use USEF Points received at shows starting on or after March 31, 2008 through shows starting on or before March 29, 2009, as a means of qualification, using the top 15 horse shows for each entry during this time period. Speed of 360 yards/330 meters per minute will be used for classes in this section. No nomination fee.

**ENTRY FEE FOR CLASSES 221 - 223 IS \$250
INDIVIDUAL CLASSES MAY NOT BE ENTERED**

CLASS 221

\$1,000 PONY JUMPER, TIME FIRST JUMP-OFF

Table II, Sec. 2(b) Fences 1.00m.

CLASS 222

\$1,000 PONY JUMPER, TIME FIRST JUMP-OFF

Table II, Sec. 2(b) Fences 1.00m.

CLASS 223

\$2,500 PONY JUMPER, TIME FIRST JUMP-OFF

Qualifying event for the 2009 North American League Pony Jumper Finals.

Table II, Sec. 2(a) Fences 1.05m.

CLASS 224

PONY JUMPER CHAMPIONSHIP

Ribbons won in Class 221 & 222 to count; 10-6-4-2-1-1/2. Ribbons won in class 223 to count 15-9-6-3-2-1.

Trophy and Champion Ribbon; Reserve Champion Ribbon

CLASS 225

PONY JUMPER STYLE AWARD

To be awarded to the Pony Jumper Rider who, in the opinion of the judges, best exemplifies the American style of equitation, and the respectful, dignified, courteous and workmanlike manner of a true sportsman.

Trophy and Champion Ribbon

Entries Must be Postmarked by March 30th

\$8,500 ADULT AMATEUR JUMPER SECTION

The Committee will limit the number of entries accepted in this section. See page 3. Horses will be accepted based on USEF Adult Amateur Jumper points earned during the qualifying period. Only two horses per rider will be accepted. No nomination fee.

**ENTRY FEE FOR CLASSES 231 - 233 IS \$500
INDIVIDUAL CLASSES MAY NOT BE ENTERED**

CLASS 231

\$2,500 ADULT AMATEUR JUMPER, TIME FIRST JUMP-OFF

Table II, Sec. 2(b) Fences 1.10m.

CLASS 232

\$5,000 ADULT AMATEUR JUMPER CLASSIC, TIME FIRST JUMP-OFF

Table II, Sec. 2(a) Fences 1.15m. Member event of the 2009 North American League.

1st, \$1,500; 2nd, \$1,100; 3rd, \$600; 4th, \$350; 5th, \$300;
6th, \$250; 7th, \$250; 8th, \$250; 9th, \$200; 10th, \$200

CLASS 233

\$1,000 ADULT AMATEUR JUMPER, TIME FIRST ROUND

Table II, Sec. 1 Fences 1.10m.

CLASS 234

ADULT AMATEUR JUMPER CHAMPIONSHIP

Ribbons won in Class 231 & 233 to count; 10-6-4-2-1-1/2. Ribbons won in class 232 to count 15-9-6-3-2-1.

Trophy and Champion Ribbon; Reserve Champion Ribbon

Ox Ridge June Charity Horse Show

Benefitting The Equus Foundation

June 10-14, 2009

AA Rated Hunters
Improved Time Schedule
Added Prize Money
Young Jumper Qualifying Classes
Marshall & Sterling Event
USEF Computer List Grand Prix
VIP Hospitality Tent
Entries Close May 1st

We look forward to seeing you there!!

\$212,500 OPEN JUMPER SECTION

The Committee will limit the number of riders accepted in this section. See page 3. Riders limited to two horses per class.

Declarations must be made in the Horse Show Office no later than 9:00 A.M. on the day of the competition unless otherwise noted (see Grand Prix and Saturday evening classes).

CLASS 241

\$7,500 OPEN JUMPER—FAULTS CONVERTED

Table III Fences 1.40m.

Qualifying Event for 2009 North American League Open Speed Finals.

Entry Fee \$200

CLASS 242

\$7,500 OPEN JUMPER—TIME FIRST ROUND

Table II, Sec. 1 Fences 1.45m.

Entry Fee \$200

CLASS 243

\$7,500 OPEN JUMPER—TIME FIRST JUMP-OFF

Table II, Sec. 2(a) . Fences 1.50m.

Entry Fee \$200

CLASS 244

\$10,000 OPEN JUMPER—TIME FIRST JUMP-OFF

Table II, Sec. 2(a). Fences 1.50m.

Entry Fee \$250

CLASS 245

\$10,000 OPEN JUMPER—HIT & HURRY

FEI Article 267 (for scoring purposes only) Fences 1.40m.

Any horse that competes in this class becomes ineligible for Class 246, Grand Prix of Devon.

Entry Fee \$250



Comfort Inn - Valley Forge

U.S. Route 202 North
550 West DeKalb Pike

King of Prussia, PA 19406

Phone: (610) 962-0700

Fax: (610) 962-0218

1-(800)222-0222

Devon Horse Show & Country Fair

\$99.99 (UP TO 4 PEOPLE)

**121 Newly Renovated Rooms
Complimentary Deluxe Continental Breakfast
Fitness Center**

**Adjacent to King of Prussia Mall
5 miles to Devon Horse Show**

For reservations call toll free at:

1-800-222-0222

***Please ask for the Devon Horse Show rate**

The following information applies to Class 246 - Grand Prix of Devon & Class 249 - Idle Dice Open Stake.

Declarations received after the published deadline or improperly completed will be assessed a penalty of \$100. In the event of acceptance of a late declaration, the declared entrant will be placed in the #1 position in the order of go.

Starting Order: In the first round all the horses' names are drawn individually starting with the first position and then working down. In the event of a jump-off, the Starting Order will remain the same as in the first round.

Horses showing in either class must be USEF Recorded and pay the \$35 IHP fee.

Attire, Courses & Information: See USEF Rules & Devon General Regulations.

CLASS 246

\$100,000 GRAND PRIX OF DEVON—TIME FIRST JUMP-OFF

Declarations to compete must be made no later than 12:00 p.m. Wednesday, May 27th. Declarations received after 12:00 p.m. May 27th will be accepted at managements discretion. Horses competing in this class may not compete in any other class on the same day. Horses must be on the grounds no later than 5:00 p.m., Wednesday, May 27th. Table II, Sec. 2(a), USEF International Level, Fences 1.45-1.60m, speed 375 m/min. Bonus Points.

Entry Fee \$1,000

1st, Trophy and \$30,000; 2nd, \$22,000; 3rd, \$13,000; 4th, \$8,000; 5th, \$6,000; 6th, \$5,000; 7th, \$4,000; 8th, \$3,000; 9th, \$3,000; 10th, \$2,000; 11th, \$2,000; 12th, \$2,000

CLASS 247

RICHARDE. McDEVITT STYLE AWARD

Awarded to the rider who exemplifies the best style of riding during the Grand Prix of Devon.

CLASS 248

\$20,000 OPEN JUMPER—GAMBLERS' CHOICE/TOP SCORE

JP149.1. Fences 1.50m.

Entry Fee \$350

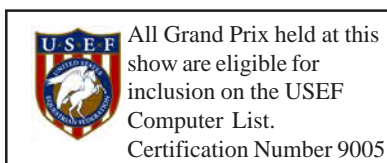
CLASS 249

\$50,000 IDLE DICE OPEN JUMPER STAKE—TIME FIRST JUMP-OFF

Declarations to compete must be made no later than 5:00 p.m. Friday, May 29th. Declarations received after 5:00 p.m. May 29th will be accepted at management's discretion. Horses competing in this class may not compete in any other class on the same day. Horses must be on the grounds no later than 5:00 p.m., Friday, May 29th. Table II, Sec. 2(a), USEF National Level, fences 1.40-1.50m, speed 375 m/min. Bonus Points.

Entry Fee \$750

1st, Trophy and \$15,000; 2nd, \$11,000; 3rd, \$6,500; 4th, \$4,000; 5th, \$3,000; 6th, \$2,500; 7th, \$2,000; 8th, \$1,500; 9th, \$1,500; 10th, \$1,000; 11th, \$1,000; 12th, \$1,000



CLASS 250

OPEN JUMPER CHAMPION AND RESERVE CHAMPION

Awarded to the horse with the greatest number of points in this section. Tie for Champion will remain tied. Ribbons won in Classes 241 - 245 & 248 to count; 10-6-4-2-1-1/2. Ribbons won in classes 246 and 249 to count 15-9-6-3-2-1.

Trophy and Champion Ribbon; Reserve Champion Ribbon

CLASS 251

LEADING OPEN JUMPER RIDER

Awarded to the rider with the greatest number of points in this section. Ties for Leading Rider will remain tied and the award will be made equally. Ribbons won in classes 241 - 245 & 248 to count; 10-6-4-2-1-1/2. Ribbons won in classes 246 and 249 to count 15-9-6-3-2-1. If a rider rides more than one horse in a class, only the points on their top placed horse will count.

Trophy and Devon Jacket

\$9,000 YOUNG JUMPER SECTION

The Committee reserves the right to restrict entries for the Young Jumpers to 15 per age group and to accept post entries as necessary. Limit two horses per rider. No nomination fee. Exempt from qualifying fee. All entry fees must accompany entry.

CLASS 261

\$1,500 FIVE YEAR OLD YOUNG JUMPER, TIME FIRST JUMP-OFF

Table II, Sec. 2(b) Fences 1.15-1.20m.

Entry Fee \$80

CLASS 262

\$1,500 FIVE YEAR OLD YOUNG JUMPER, TIME FIRST JUMP-OFF

Table II, Sec. 2(b) Fences 1.15-1.20m.

East Coast Young Jumper Qualifying Class.

Entry Fee \$80

CLASS 263

\$1,500 SIX YEAR OLD YOUNG JUMPER, TIME FIRST JUMP-OFF

Table II, Sec. 2(b) Fences 1.20-1.30m.

Entry Fee \$80

CLASS 264

\$1,500 SIX YEAR OLD YOUNG JUMPER, TIME FIRST JUMP-OFF

Table II, Sec. 2(b) Fences 1.20-1.30m.

East Coast Young Jumper Qualifying Class.

Entry Fee \$80

CLASS 265

\$1,500 SEVEN/EIGHT YEAR OLD YOUNG JUMPER, TIME FIRST JUMP-OFF

Table II, Sec. 2(b) Fences 1.30-1.35m.

Entry Fee \$80

CLASS 266

\$1,500 SEVEN/EIGHT YEAR OLD YOUNG JUMPER, TIME FIRST JUMP-OFF

Table II, Sec. 2(b) Fences 1.30-1.35m.

East Coast Young Jumper Qualifying Class.

Entry Fee \$80

Prize Money Purses will be distributed as follows in the Saddlebred, Hackney Horse and Pony and Roadster Horse and Pony divisions.

PURSE	1st	2nd	3rd	4th	5th	6th	7th	8th
\$200	90	50	25	15	10	10		
250	100	60	35	25	15	15		
350	110	70	50	30	25	25	20	20
500	150	90	70	55	45	35	30	25
1,000	300	180	140	110	90	70	60	50
1,500	450	270	210	165	135	105	90	75
2,500	700	500	300	250	225	200	175	150
3,000	850	550	475	325	275	200	175	150

AMERICAN SADDLEBRED HORSE DIVISION

Three-Gaited, Five-Gaited, Fine Harness and American Saddlebred Pleasure Horses of this division must be registered with the American Saddlebred Horse Association, or the Canadian American Saddle Horse Registry, and must be entered under their full registered names with registration numbers, and under the names of the owner(s) of record with the A.S.H.A. or C.A.S.H.R., except as noted in Art. SB101.

A copy of the registration papers showing proof of ownership must be submitted with the entry blank.

If a horse has been injured after the close of entries the substitution of another horse will be allowed. Exhibitors must immediately notify the Horse Show Office of the change in entry.

AMERICAN SADDLEBRED THREE-GAITED SECTION

CLASS 351

\$200 THREE-GAITED SADDLE HORSE—JUNIOR EXHIBITOR

Entry Fee \$20

CLASS 352

\$200 THREE-GAITED SADDLE HORSE—LADY TO RIDE

Entry Fee \$20

CLASS 353

\$200 THREE-GAITED SADDLE HORSE—AMATEUR

Entry Fee \$20

CLASS 354

\$2,500 THREE-GAITED SADDLE HORSE STAKE—AMATEUR TO RIDE

To be eligible, horses must have been entered, shown and judged in class 353; Amateur Lady may qualify out of class 352.

No Entry Fee

CLASS 357

\$200 THREE-GAITED SADDLE HORSE—OPEN

Entry Fee \$20

CLASS 358

\$3,000 THREE-GAITED SADDLE HORSE STAKE

To be eligible, horses must have been entered, shown and judged in any other class in this section.

No Entry Fee

AMERICAN SADDLEBRED FIVE-GAITED SECTION

CLASS 361

\$200 FIVE-GAITED SADDLE HORSE—LADY TO RIDE

UPHA Pink Ribbon Class.

Entry Fee \$20

CLASS 363

\$200 FIVE-GAITED SADDLE HORSE—AMATEUR

Entry Fee \$20

CLASS 364

\$2,500 FIVE-GAITED SADDLE HORSE STAKE—AMATEUR TO RIDE

To be eligible, horses must have been shown and judged in class 361 or 363.

No Entry Fee

CLASS 365

\$200 FIVE-GAITED SADDLE HORSE—JUNIOR AND/OR NOVICE

Entry Fee \$20

CLASS 367

\$200 FIVE-GAITED SADDLE HORSE—OPEN

Entry Fee \$20

CLASS 368

\$3,000 FIVE-GAITED SADDLE HORSE STAKE

Stallion, mare or gelding. To be eligible, horses must have been entered, shown and judged in any other class in this section.

No Entry Fee

**Saddlebred Entries Must be Postmarked prior to
Midnight Monday, April 20th**

**Again in 2009 - Exhibitor receptions will honor
Junior Weekend participants, along with Hunter/Jumper,
Saddlebred/Harness and Coaching.**

AMERICAN SADDLEBRED FINE HARNESS SECTION

(Shown to an appropriate four-wheeled vehicle)

CLASS 373

\$200 FINE HARNESS HORSE—AMATEUR

Entry Fee \$20

CLASS 374

\$200 FINE HARNESS HORSE—OPEN

Entry Fee \$20

CLASS 375

\$1,500 FINE HARNESS HORSE CHAMPIONSHIP

To be eligible, horses must have been entered, shown and judged in any other class in this section.

No Entry Fee

CLASS 376

\$1,000 FINE HARNESS HORSE CHAMPIONSHIP—AMATEUR

To be eligible, horses must have been entered, shown and judged in class 373.

No Entry Fee

SHOW PLEASURE HORSE SECTION

CLASS 381

\$200 SHOW PLEASURE DRIVING HORSE

Entry Fee \$20

CLASS 382

\$500 SHOW PLEASURE DRIVING HORSE CHAMPIONSHIP

To be eligible, horses must have been entered, shown and judged in class 381.

No Entry Fee

CLASS 383

\$200 THREE-GAITED ENGLISH SHOW PLEASURE HORSE—JR. EXHIBITOR

Entry Fee \$20

CLASS 384

\$200 THREE-GAITED ENGLISH SHOW PLEASURE HORSE—ADULT RIDER

Entry Fee \$20

CLASS 385

\$1000 THREE-GAITED ENGLISH SHOW PLEASURE HORSE CHAMPIONSHIP

To be eligible, horses must have been entered, shown and judged in classes 383 or 384.

No Entry Fee

CLASS 386

\$200 FIVE-GAITED ENGLISH SHOW PLEASURE HORSE

Entry Fee \$20

CLASS 387

\$350 FIVE-GAITED ENGLISH SHOW PLEASURE HORSE CHAMPIONSHIP

To be eligible, horses must have been entered, shown and judged in class 386.

No Entry Fee

WESTERN COUNTRY PLEASURE HORSE SECTION

CLASS 391

\$200 WESTERN COUNTRY PLEASURE HORSE

Entry Fee \$20

CLASS 392

\$500 WESTERN COUNTRY PLEASURE HORSE CHAMPIONSHIP

To be eligible, horses must have been entered, shown and judged in class 391.

No Entry Fee

COUNTRY PLEASURE HORSE SECTION

CLASS 393

\$200 THREE-GAITED COUNTRY PLEASURE HORSE—JR. EXHIBITOR

Entry Fee \$20

CLASS 394

\$200 THREE-GAITED COUNTRY PLEASURE HORSE—ADULT RIDER

Entry Fee \$20

CLASS 395

\$350 THREE-GAITED COUNTRY PLEASURE HORSE CHAMPIONSHIP

To be eligible, horses must have been entered, shown and judged in class 393 or 394.

No Entry Fee

CLASS 396

\$200 COUNTRY PLEASURE DRIVING HORSE

Entry Fee \$20

CLASS 397

\$350 COUNTRY PLEASURE DRIVING HORSE CHAMPIONSHIP

To be eligible, horses must have been entered, shown and judged in class 396.

No Entry Fee

AMERICAN SADDLEBRED PARK HORSE SECTION

To be shown with a full mane and tail.

CLASS 401

\$200 THREE-GAITED PARK HORSE—AMATEUR

Entry Fee \$20

CLASS 402

\$500 OPEN THREE-GAITED PARK HORSE STAKE—AMATEUR

To be eligible, horses must have been entered, shown and judged in class 401.

No Entry Fee

CLASS 403

\$200 THREE-GAITED PARK HORSE—OPEN

Entry Fee \$20

CLASS 404

\$1,000 OPEN THREE-GAITED PARK HORSE STAKE

To be eligible, horses must have been entered, shown and judged in class 403.

No Entry Fee

HACKNEY DIVISION

This USEF recognized competition has been designated as a Regional Triple Point Show for the 2009 competition year.

HACKNEY HORSE SECTION

Entries must be registered with the American or Canadian Hackney Horse Societies, and must be entered under their full registered name by owner of record.

CLASS 411

\$200 HACKNEY HORSE—OPEN

Entry Fee \$20

CLASS 412

\$1,500 HACKNEY HORSE CHAMPIONSHIP

To be eligible, horses must have been entered, shown and judged in class 411.

No Entry Fee

HACKNEY PONY SECTION

Entries must be registered with the American or Canadian Hackney Horse Societies and must be entered under their full registered name by owner of record.

CLASS 413

\$200 HACKNEY PONY—AMATEUR TO DRIVE

Entry Fee \$20

CLASS 414

\$200 HACKNEY PONY—OPEN

Entry Fee \$20

CLASS 416

\$1,500 HACKNEY PONY CHAMPIONSHIP

To be eligible, ponies must have been entered, shown and been judged in any other single performance class in this section.

No Entry Fee

CLASS 417

\$1,500 HACKNEY PONY CHAMPIONSHIP—AMATEUR

To be eligible, ponies must have been entered, shown and been judged in class 413.

No Entry Fee

HACKNEY/HARNESS PONY PLEASURE SECTION

CLASS 421

\$200 HACKNEY/HARNESS PONY PLEASURE DRIVING

Entry Fee \$20

CLASS 423

\$350 HACKNEY/HARNESS PONY PLEASURE DRIVING CHAMPIONSHIP

To be eligible, ponies must have been entered, shown and judged in classes 421.

No Entry Fee

HACKNEY/HARNESS PONY SECTION

No pony in the Hackney/Harness Pony Section may be shown in harness in the Hackney Section. All entries must possess a current measurement card or measurement form issued by US Equestrian.

Not Exceeding 12.2 Hands. To Be Shown in Harness.

CLASS 424

\$200 HACKNEY/HARNESS PONY—AMATEUR TO DRIVE

Entry Fee \$20

CLASS 425

\$200 HACKNEY/HARNESS PONY—OPEN

Entry Fee \$20

CLASS 426

\$200 HACKNEY/HARNESS PONY—LIMIT

Entry Fee \$20

CLASS 427

\$1,500 HACKNEY/HARNESS PONY CHAMPIONSHIP

To be eligible, ponies must have been entered, shown and judged in any other single performance class in this section.

No Entry Fee

CLASS 428

\$1,500 HACKNEY/HARNESS PONY CHAMPIONSHIP—AMATEUR TO DRIVE

To be eligible, ponies must have been entered, shown and judged in class 424.

No Entry Fee

ROADSTER DIVISION

ROADSTER HORSE SECTION

The Roadster must be a standardbred or of standardbred type. Horses shall be serviceably sound and shown without artificial appliances except boots and an inconspicuously applied tail switch or brace.

Member Event of the 2009 Equine Roadster Cup Series. All three classes will count for incentive points. Finals to be held at the Kentucky Fall Classic.

CLASS 431

\$250 SINGLE ROADSTER—AMATEUR TO DRIVE

Entry Fee \$20

CLASS 432

\$250 SINGLE ROADSTER—OPEN

Entry Fee \$20

CLASS 433

\$500 SINGLE ROADSTER CHAMPIONSHIP

To be eligible, horse must have been entered, shown and judged in any other class in this section.

No Entry Fee

ROADSTER PONY SECTION

Ponies, any breed, must not exceed 50" in height. Ponies may not be shown unless the owner possesses a current measurement card or valid measurement form issued by USEF.

CLASS 434

\$250 SINGLE ROADSTER PONY—AMATEUR TO DRIVE

Entry Fee \$20

CLASS 435

\$200 SINGLE ROADSTER PONY—LIMIT

Entry Fee \$20

CLASS 436

\$250 SINGLE ROADSTER PONY—OPEN

Entry Fee \$20

CLASS 437

\$500 SINGLE ROADSTER PONY CHAMPIONSHIP

To be eligible, ponies must have been entered, shown and judged in any other class in this section.

No Entry Fee

CLASS 438

\$500 SINGLE ROADSTER PONY CHAMPIONSHIP—AMATEUR TO DRIVE

To be eligible, ponies must have been entered, shown and judged in class 434.

No Entry Fee

FRIESIAN SECTION

CLASS 481

\$200 FRIESIAN HORSE—PLEASURE SADDLE OPEN

To be shown at a flat walk, animated trot and canter.

Entry Fee \$20

CLASS 482

\$200 FRIESIAN HORSE—PLEASURE SADDLE AMATEUR

To be shown at a flat walk, animated trot and canter.

Entry Fee \$20

CLASS 483

\$350 FRIESIAN HORSE—PLEASURE SADDLE CHAMPIONSHIP

To be shown at a flat walk, animated trot and canter.

No Entry Fee

COACHING DIVISION

Entries must be driven to an authentic Road Coach or Park Drag. **The Coaching Division will be conducted under an Invitational Format.** Open to horses and ponies. **USEF Opportunity Class Status.** Horses are exempt from the Federation Fee, including the Equine Drugs and Medication fee. However, under USEF rule GR821.3, horses entered only in these classes are still subject to and must comply with the Drugs and Medication rules and are subject to drug testing.

Hitches will be inspected for cleanliness of animals, harness and vehicle and general appearance of turn out prior to the class and may be rejected from competition at the discretion of the judge. Entries will be asked to halt, and stand quietly. Entries will be lined up side by side facing the ringmaster. A groom is permitted at the horses' head, but should not hold the animal.

The following rules apply to all entries in this Division:

1. Coaches must be neat and painted properly.
2. Appropriate harness must be used, including the traditional three wooden lead bars.
3. Whips must be carried in all classes by the driver.
4. The leaders may not be tied together. Reins must be held in one hand, the other hand being available to assist as required.
5. Appearance and cleanliness of harness, horses and vehicle as well as general appearance of the whole to count.
6. Entries are requested to be all tacked up in the stable area forty-five minutes before the scheduled time of judging.
7. Groom apparel: Groom livery to be appropriate to the vehicle.
Park Drag: Two grooms in either formal or working livery, which must be neat and of the same style. Road Coach: To have guard and groom in proper livery.

CLASS 451

FOUR-IN-HAND, AUTHENTIC ROAD COACH OR PARK DRAG—APPOINTMENTS

To be judged 50% on performance, quality and manners, 30% on presentation; 20% on appointments.

No Entry Fee

Trophy and Six Ribbons

CLASS 452

FOUR-IN-HAND, AUTHENTIC ROAD COACH OR PARK DRAG—SUITABLE FOR PLEASURE

To be driven in the ring at an even pace, execute a figure eight, stand quietly and start off mannerly. To be judged 50% manners, 30% whip, 10% vehicle and 10% harness, general appearance, presentation, and condition of turnout.

No Entry Fee

Trophy and Six Ribbons

**Saddlebred & Coaching Entries Must be Postmarked prior to
Midnight Monday, April 20th**

**Again in 2009 - Exhibitor receptions will honor
Junior Weekend participants, along with Hunter/Jumper,
Saddlebred/Harness and Coaching.**

CLASS 453**FOUR-IN-HAND, AUTHENTIC ROAD COACH OR PARK DRAG**

Judged 50% on performance of the team, 30% whip, 20% harness, general appearance, presentation and condition of turnout. Two coaches will simultaneously drive mirror courses of up to 14 markers, each set at a distance of 9'.

No Entry Fee

Trophy and Six Ribbons

CLASS 454**FOUR-IN-HAND, AUTHENTIC ROAD COACH OR PARK DRAG—DRIVING COMPETITION**

To be judged over a course in the ring, consisting of approximately 10 markers suitably located, to be adjusted according to the width of the vehicle competing, placed 20" wider than the wheel track. Penalties are converted into seconds and added on for the final score. Fastest time to be the winner.

No Entry Fee

Trophy and Six Ribbons

CLASS 455**FOUR-IN-HAND, AUTHENTIC ROAD COACH OR PARK DRAG—DRIVING COMPETITION**

To be judged over a course in the ring, consisting of approximately 10 markers suitably located, to be adjusted according to the width of the vehicle competing, placed 20" wider than the wheel track. Placings will be determined on a low fault basis. Time will decide ties.

No Entry Fee

Trophy and Six Ribbons

Penalties:

	Class 454	Class 455
1. Exceeding time allowed (every commenced second)	0.5 seconds	1 fault
2. Dislodging a ball or knocking over an obstacle	10 seconds	4 faults
3. Knocking over a start or finishing marker	10 seconds	4 faults
4. First disobedience or groom dismounting anywhere on course	10 seconds	3 faults
5. Second disobedience or groom dismounting anywhere on course	20 seconds	6 faults
6. Third disobedience or groom dismounting anywhere on course	Elimination	Elimination
7. Going off course	Elimination	Elimination
8. Failing to pass through the start or finishing flag	Elimination	Elimination
9. Failure to carry whip	Elimination	Elimination
10. Three or more horses cantering at the same time for more than 10 seconds:		
First time	10 seconds	10 faults
Second time	20 seconds	10 faults
Third time	Elimination	Elimination

CLASS 456**COACHING CHAMPIONSHIP**

To be awarded to the coach having won the greatest number of points in Classes 451, 452, 453, 454 and 455. In order to earn points in classes 454 and 455, an exhibitor must have participated in 2 of the 3 classes also offered in the section (451, 452 and 453). Points will be awarded for all ribbons won 5, 3, 2, 1 and 1/2.

Trophy and Champion Ribbon; Reserve Champion Ribbon

CLASSES 457 & 458**COACH HORN COMPETITION**

There will be a Coach Horn Competition held during the Coaching Division. It is to be judged on different merits, when the Coach is moving and stationary. Tuesday evening (Class 457) will be open to Amateurs, Friday evening (Class 458) will be open to all.

Trophy and Ribbons

MISCELLANEOUS DRIVING CLASSES

USEF Opportunity Class Status

Horses are exempt from the Federation Fee, including the Equine Drugs and Medication fee. However, under USEF rule GR821.3, horses entered only in these classes are still subject to and must comply with the Drugs and Medication rules and are subject to drug testing.

**Trophy and Six Ribbons in all classes
Entry Fee \$20 per class.**

CLASS 461 OPEN UNICORNS

Horses or ponies. To be shown to an appropriate vehicle at a park pace and smart trot. Variance in color will not eliminate but uniformity will be considered. Joint ownerships permitted. Animals need not be named. To be judged on performance, quality and manners.

CLASS 462 OPEN TANDEMS—HORSES OR PONIES 5 ENTRIES TO FILL

To be shown to a gig or other appropriate two-wheeled vehicle. A smart leader is essential. Variance in color will not eliminate but uniformity will be considered. To be judged on performance, quality, uniformity and manners.

CLASS 463 SCURRY DRIVING FOR PAIRS—NO COMPETITION VEHICLES

Open to pairs of horses driven to a four-wheeled antique carriage vehicle. Wire wheels prohibited. To be driven against the clock through obstacles (cones with balls). 10 seconds to be added for each ball knocked off. Fastest time to determine winner. Cantering or galloping permitted. 20" clearance on wheel track on ground.

CLASS 465 PONY PAIRS PLEASURE TURNOUT

Open to pairs of ponies driven to a four-wheeled antique carriage vehicle. To be judged: 40% on performance, manners, way of going; 30% on the condition, fit and appropriateness of the harness and vehicle; 15% on overall impression; 15% on neatness of attire.

CLASS 466 PONY PAIRS SCURRY DRIVING

Open to pairs of ponies driven to a four-wheeled antique carriage vehicle. Wire wheels prohibited. To be driven against the clock through obstacles (cones with balls). 10 seconds to be added for each ball knocked off. Fastest time to determine winner. Cantering or galloping permitted. 20" clearance on wheel track on ground.

CLASS 467
PONY PAIRS DRIVING CHAMPIONSHIP

To be awarded to the two entries having the greatest number of points in classes 465 and 466. Points will be awarded for all ribbons won 7, 5, 3, 2 and 1. In case of a tie, the award will be presented to the entry placing highest in class 465.

Trophy and Champion Ribbon; Reserve Champion Ribbon

CLASS 468
SINGLE HORSE PLEASURE DRIVING

Open to horses driven to a four-wheeled antique carriage vehicle. To be judged: 40% on performance, manners, way of going; 30% on the condition, fit and appropriateness of the harness and vehicle; 15% on overall impression; 15% on neatness of attire.

CLASS 469
SINGLE HORSE CURRY

Open to horses driven to a four-wheeled antique carriage vehicle. Wire wheels prohibited. To be driven against the clock through obstacles (cones with balls). 10 seconds to be added for each ball knocked off. Fastest time to determine winner. Canter or galloping permitted. 20" clearance on wheel track on ground.

CLASS 470
SINGLE HORSE CHAMPIONSHIP

To be awarded to the two entries having the greatest number of points in classes 468 and 469. Points will be awarded for all ribbons won 7, 5, 3, 2 and 1. In case of a tie, the award will be presented to the entry placing highest in class 468.

Trophy and Champion Ribbon; Reserve Champion Ribbon

**Saddlebred, Coaching & Pleasure Drive Entries Must be
Postmarked prior to Midnight Monday, April 20th**

**Again in 2009 - Exhibitor receptions will honor
Junior Weekend participants, along with Hunter/Jumper,
Saddlebred/Harness and Coaching.**

CARRIAGE PLEASURE DRIVE
USE CARRIAGE DRIVE ENTRY BLANK. NO POST ENTRIES.
USEF Opportunity Class Status

Horses are exempt from the Federation Fee, including the Equine Drugs and Medication fee. However, under USEF rule GR821.3, horses entered only in these classes are still subject to and must comply with the Drugs and Medication rules and are subject to drug testing.

Entry Fee \$20

TO BE HELD AT 12:00 NOON, SUNDAY, MAY 24, 2009 AT ST. DAVID'S CHURCH ON SOUTH VALLEY FORGE ROAD.

Open to Horses or Ponies, driven in Single Harness (Separate Two and Four Wheel Vehicle Sections), Double Harness (Pairs or Tandems), Unicorn or Four-in-Hand. Fours, Unicorns, Pairs or Tandems need not be the property of one owner. To be shown to suitable vehicles. (Show wagons and commercial vehicles are excluded. See Special Division)

In the event more entries are received than can be accommodated, the Committee will limit the number of entries in each Section according to the following **new** schedule:

HORSE DIVISION

- Class 501—(18) Single Harness, Two Wheel Vehicles**
- Class 502—(18) Single Harness, Four Wheel Vehicles**
- Class 503—(13) Double Harness—Pairs—Tandems**
- Class 504—(No Limit) Unicorns and Four-in-Hands**

PONY DIVISION

- Class 505—(18) Single Harness, Two Wheel Vehicles**
- Class 506—(18) Single Harness, Four Wheel Vehicles**
- Class 507—(13) Double Harness—Pairs—Tandems**
- Class 508—(No Limit) Unicorns and Four-In-Hands**

- Class 509—(7) Light Commercial and Farmer's Division
to compete as one Group**

Entries will be accepted on the basis of the date of their receipt at the Entries Office. No entries will be accepted before March 1st. In the event more entries are received on the same date than can be accepted, the Committee will hold a drawing on those specific entries to determine which are accepted.

CLASS 510**CHAMPIONSHIP DRIVE OFF**

To be awarded to the Exhibitor in Classes 501-508 (Horses and Ponies) who in the opinion of the judges, has the best turn out.

Championship Trophy and Ribbon

TIME SCHEDULE: Exhibitors will begin leaving from St. David's at 12:00 Noon for the Horse Divisions in order, and at about 1:00 P.M. for the Pony, Light Commercial and Farmers' Divisions in order. Arrival on the Devon Show Grounds for Presentation of Awards will take place between 2:00 P.M. and 4:00 P.M.

JUDGING: Judges will inspect the turnouts in a line-up by section at St. David's Church and will be immediately started for the Drive by the Starter. Entries will be observed along the road. Upon arrival at the Devon Show grounds, each section will be judged in the Dixon Oval. Condition of the horses and ponies, soundness of wind and limb, and complete turnout will be taken into consideration by the judges. The route of the Drive to the Devon Horse Show Grounds will be about 4 1/2 miles for the Horse Division and about 4 miles for the Pony, Light Commercial, and Farmers' Division. Maximum Time Allowed on the road is 40 minutes. There will be no Bonus Points for completing the Course in less time. Excessive speed is not required. Racing, obstructing another vehicle or exceeding the Time Allowed will entail disqualification.

RULES: Dress should be appropriate for driving, but not "period costume." No person under 18 years of age will be permitted to drive, unless accompanied by an adult.

AWARDS: The final selection for the best turnout and Presentation of Awards will take place at the Devon Horse Show Grounds in the Dixon Oval. Each Exhibitor will be awarded a bronze plaque. Six ribbons will be awarded in each Section.

**FIRST AND SECOND PLACE WINNERS IN EACH CLASS
SHOULD WAIT FOR OVERALL CHAMPION PRESENTATION**

Index

Adult Amateur Jumper	38	North American League	34
Amateur Owner Hunter	30	Officials	8
Amateur Owner Jumper	36	Open Jumper	39
AHJF	insert	Ox Ridge Horse Show	38
Best Child Rider	17, 19	Parent & Child	20
Carriage Pleasure Drive	54	Park Horse	46
Coaching	50	Pennsylvania Bred Breeding	23
Comfort Inn	39	Pennsylvania Horse Show Association ..	19
Country Pleasure	45	Pony Jumper	37
Courtyard at the Marriott	OBC	Pony Pairs Driving	52
Directions	6	Prize Money Breakdown	
Family Class	20	Hunter	17
Fine Harness	44	Jumper	34
First Year Green Hunter	28	Saddlebred	42
Five-Gaited Saddlebred	43	Regular Conformation Hunter	27
Friesian	49	Regular Working Hunter	29
Green Conformation Hunter	26	Roadster Horse	48
Hackney Horse	46	Roadster Pony	49
Hackney Pony	47	Rules & Regulations	1
Hackney/Harness Pony	48	Second Year Green Hunter	28
Hackney/Harness Pony Pleasure	47	Sheraton Park Ridge	21
Homestead Studio Suites	IFC	ShowNet	10
Hotels and Motels	4	Show Pleasure Horse	44
Hunt Teams	20	Small Junior Hunter	18
Hunter Breeding	22	Small Pony Hunter	16
Hunter Pony Breeding	25	Stabling Information	7
Hunter Seat Equitation	21	Taylor Harris Insurance	15
Junior Jumper	35	Three-Gaited Saddlebred	42
Ladies Side Saddle Hunter	33	Ticket Order Form	insert
Large Junior Hunter	19	Time Schedule	10
Large Pony Hunter	17	US Equestrian Federation, Inc.	IBC
Lead Line	20	USHJA Hunter Derby	31
Local Hunter	32	Western Country Pleasure	45
Mailing/Shipping Addresses	6	Young Hunter Under Saddle	24
Medium Pony Hunter	16	Young Jumpers	41
Miscellaneous Driving	52		

FOR THURSDAY EVENING, MAY 28 ONLY, RESERVED SEATING TICKETS MUST BE PURCHASED FOR ALL SECTIONS IN ALL GRAND STANDS

USEF Competition Name: Devon Horse Show **USEF #:** 201

Competition Division(s) and Rating(s):

A in: Green & Regular Conformation; Regular Working, Junior, Pony, AO & Green Hunter; Three Gaited & Five Gaited Saddle Horse, Saddlebred Pleasure, Friesian & Roadster Pony. B in Roadster Horse, H/H Pony Pleasure, H&H Pony & Saddlebred Park. C in AA Jumper, Side Saddle & Breeding.

USEF Equestrians Enjoy a Variety of Benefits Outside the Show Ring



When you join USEF, you'll reap the rewards all year long with MemberPerks Free Enrollment Program.

The USEF

MemberPerks program is one of many benefits of becoming a USEF Competing Equestrian today!

Join online and learn more about MemberPerks at www.usef.org.



JOHN DEERE

Up to 23% discount on select agricultural, lawn & garden and construction equipment.

Office DEPOT

30% to 60% off already heavily discounted prices.



\$1 Million in personal excess liability insurance for horse-related accidents that cause riding injury or property damage to third parties.

FarmVet.com
888-837-3626

The Official Internet Catalog of USEF. Members receive an exclusive 5% discount off full retail price on all products available through the FarmVet.com website. (not applicable for sale items)



Up to 30% off air, car, hotels and up to 60% off vacations and cruises.
www.equinetraveladvantages.com

OfficeMax

55% average discount on products.
Retail Connect Card
8888-0001-0324-8579-08



Up to 15% discount on daily rates.
Mention USEF/Hertz discount
CDP# 15757



Up to 40% discount on paint and supplies.
Preferred Customer Account
9078-1700-1

TOSHIBA
Leading Innovation >>>

Up to 25% discount on product pricing.
Mention USEF Code EPEF



Up to 15% discount at Comfort, Quality, Clarion, Sleep Inn, Rodeway Inn and Econo Lodge.
Mention USEF Code 00207740



Up to 30% off NEXT DAY and 2ND DAY shipping and up to 5% off GROUND shipping services.

Valuable Coverage

USEF Competing Equestrians get peace of mind with a free extensive group insurance policy. The policy includes \$1 million personal excess liability coverage. And, there is no deductible for this coverage.

That's just one of the many perks in the MemberPerks program offering you substantial cost savings on a variety of products and services from a wide range of companies.

In the last three years, USEF Members saved \$4 million in products and services.

Become Part of the Community ClubEquestrian.com

A place built for equestrians by equestrians, this new website covers 'all things equestrian' and features all breeds and disciplines. Go online and complete your profile page at ClubEquestrian.com.

Horse of the Year Program

As a USEF Competing Equestrian, you are eligible to compete in the Farnam®/Platform™ USEF Horse of the Year awards program which honors the horses that accumulate the highest number of points within the competition year.



*Discount partners within the MemberPerks Program are subject to change.



**OUR HOTELS ARE
CONVENIENTLY LOCATED.
IT'S OUR STAFF THAT
GOES OUT OF THE WAY.**

Whether you're staying with us for a special event or a relaxing weekend getaway, trust our hotels to provide you with all the comforts and amenities you need to have the best experience possible. Courtyard. Our rooms were made for you.SM **IT'S THE MARRIOTT WAY.SM**

Courtyard Philadelphia Devon
Wayne, PA
(610) 687-6633
Marriott.com/phldv

Courtyard Philadelphia Valley Forge
King of Prussia
Wayne, PA
(610) 687-6700
Marriott.com/phlva

To make a reservation, call
1-800-321-2211
or visit Marriott.com